



# PROSPECTUS

Postgraduate Studies AY2025/26

**Equipping Ambassadors for Christ  
in Churches and Marketplaces**

**INTEGRATING FAITH WITH  
WORK, CHURCH, AND SOCIETY**

# Table of Contents

Principal's Welcome	4
<b>QUALITY</b>	
Vision and Mission	6
Equipping Ambassadors for Christ in churches and marketplaces	7
Theological Position	8
BGST Lifelong Learning	9
Accreditation & Recognition	10
BGST Team	11
<b>RELEVANCE</b>	
Postgraduate Programme Curriculum	16
Learning Pathways	17
GCCS	18
GDCS	19
GCCM	20
GDCM	21
GCMS	22
GDMS	23
Masters Programme	
MATIS	24
MDiv	27
Revisions to Graduate Certificates and Diplomas	30
Theological Application and Practice (TAP)	32
Progressive Integrative Learning Pathway	33
Practicum Training	34
BGST Centres	36
Transfer of Academic Units into the Postgraduate System	39
Course Catalogue	40
Course Descriptions	42
Scripture	43
Tradition	49
Integrative Studies	54

# Table of Contents

## FLEXIBILITY

### General Information

Academic Year	63
Calendar of Key Events	63
Onboarding	64
Educational Resources	64
Study Commitment	65
Maximum Period for Programme Completion	65
Leave of Absence	66
Financing Your Education	66
Tuition, Fees and Expenses	66
Payment of Fees	68
BGST Community and BGST Collective	69

### Student Information

Categories of Students	70
Signing up for BGST Programmes and Courses	71
Programme Admission Requirements	71
Transfer of Academic Units and Exemptions	72
Programme Acceptance	72
Course Schedule	72
Course Registration	72
Learning Modes: Live   SPL	73
Audit Course & Credit Course Information	73
Course Types: Core   Elective   Others	74
Assignment Guidelines	75
Assignment Submissions, Deadlines and Extensions	76
Grading and Transcripts	76
Graduation Requirements	77
FAQs	77

# Principal's Welcome



**Dr Lai Pak Wah**  
Principal

## Welcome to BGST!

BGST was established in 1989 with a bold vision: to equip every Christian to become an effective ambassador for Christ, wherever God calls them—whether in the marketplace, the church, or the wider community. We believe that to fulfill this calling, Christians must be *theologically mature as they are professionally competent*, able to apply God's Word meaningfully in God's world.

Over the years, we have grown into a school deeply committed to providing **flexible, relevant, and high-quality** theological education tailored to the needs of today's Christians and churches. To date, we have trained more than 5,000 individuals—teachers, bankers, engineers, lawyers, civil servants, pastors, and more—empowering them to integrate their faith with their professional and personal lives.

In this new Prospectus for AY2025/26, we have begun a redesign of programs under our Centre for Postgraduate Studies offerings into three learning pathways - (1) Cultivating Self; (2) Ministering to Others; and (3) Reaching the World. This is intended to provide targeted clarity and equipping, aligning our course offerings to the needs of believers serving in diverse arenas.

Discipleship cannot be one-size-fits-all, it must reflect the unique seasons, challenges, and callings of God's people. By shaping our programmes in this way, we hope our students will not only gain knowledge, but also the confidence and wisdom to live out their faith authentically, so that wherever God has placed them, they may become more effective ambassadors for Christ.

Our dreams for BGST students remain steadfast:

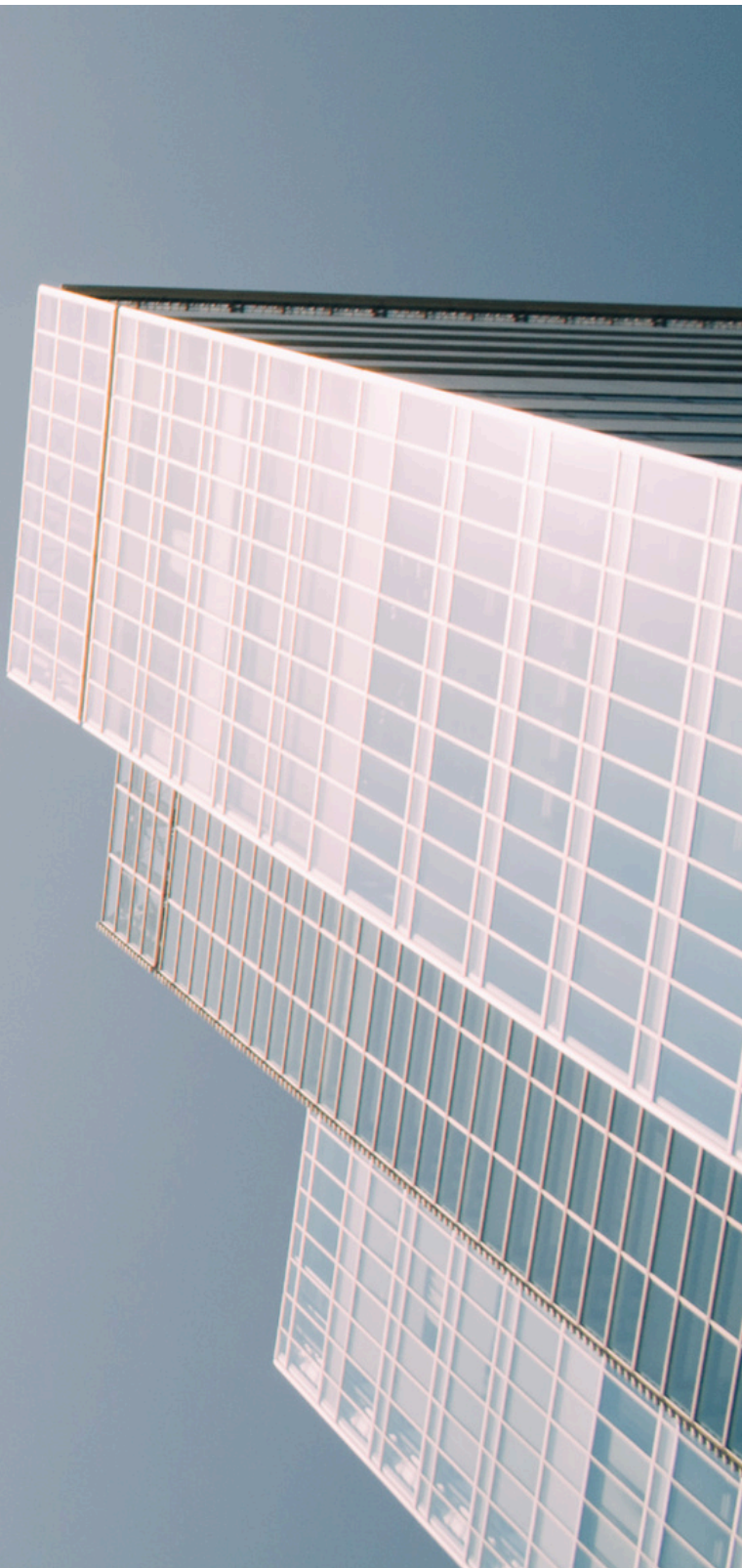
- That they exemplify Christ's love in every sphere of life—whether at work, in church, or in their communities—drawing others to Him through their words and actions.
- That they develop a deep conviction of God's calling and purposes, integrating their faith into every aspect of their lives and leading with wisdom and courage.
- That they engage actively as thought-leaders, addressing the pressing challenges of our time—from climate change and digital disruptions to aging societies, political conflicts, and shifting cultural norms—so that our societies may flourish under God's redemptive purposes.

Looking ahead, we are committed to strengthening our partnerships with churches and industry practitioners. Together, we aim to co-create innovative theological perspectives that address the unique challenges of the marketplace and contemporary culture. Our goal is to ensure that theological education remains dynamic, practical, and transformative, equipping Christians to make a lasting impact in their churches, workplaces, and communities.

Whether you are a new student, a church leader, or an industry practitioner, we warmly welcome you to the BGST community. Join us on this journey of equipping ambassadors for Christ who are prepared to make a positive difference in a rapidly changing world.

Yours in Christ,  
Dr Lai Pak Wah  
Principal, BGST

# Vision and Mission



## Vision

Equipping ambassadors for Christ in churches and marketplaces.

## Mission

By providing Christian education and equipping to marketplace professionals, ministry leaders and lay Christians, that emphasizes intimacy with Christ, cultural relevance, and thoughtful engagement, delivered through learning that is flexible, integrative and applicable.

# Equipping ambassadors for Christ in churches and marketplaces

## Christians in Churches and Marketplaces

---

Christ not only creates and redeems us from our sins, but is also the Lord of every moment and aspect of our lives. For this reason, Christian salvation is never *just* personal, but cosmic – it is Christ calling us to participate in His transformation or re-creation of all humanity and His Creation.

This renewal of creation involves not just our worship and ministry in our **churches**. It also reaches deep into the people we become, the work we do, the cultures and technologies we create, the leisure we enjoy, and the things we love – whether books, sports, food, or the arts. It permeates the communities we engage with, whether religious, academic, social, or business.

In ancient times, the Romans have places for these diverse activities: marketplaces (or *agoras* in Greek). These public squares and bazaars are spaces where businesses trade, public policies are practised, religious activities are observed, and cultures are celebrated.

Today, these diverse marketplaces include offices, factories, studios, government, civil society, and churches. Here, Christians are called to be **Ambassadors for Christ (2 Cor 5:20)** displaying the fullness of His salvation: His wisdom, healing and restoration. We demonstrate how the Christian faith integrates with and transform our work, church, and society.

## Become Ambassadors for Christ

---

BGST aspires to equip Christians to become effective ambassadors for Christ in churches and marketplaces, who integrate their faith with work, church, and society.

As such, we desire to train graduates to be:



**Assured**  
in Christ's  
Love



**Growing**  
in Christ's  
Way



**Anchored**  
in Christ's  
Word



**Participating**  
in Christ's  
Work



**Engaged**  
in Christ's  
World

# Theological Position

The sole authority of the doctrines of Biblical Graduate School of Theology (BGST) is the revelation of God given in the Scriptures of the Old and New Testaments.

BGST also acknowledges the significance of the theological heritage handed down to the Christian church through the historic creeds, confessions and catechisms, in particular, the Apostles' Creed and Nicene Creed, in informing BGST's formation of its chief tenets of doctrine, of which the abbreviated form is as follows.

We believe in the divine, verbal and plenary inspiration of the Holy Scriptures in the original languages, their consequent inerrancy and infallibility and, as the Word of God, their supreme and final authority in faith and life.

We believe that the whole counsel of God concerning all things necessary for His own glory, the salvation of humankind, faith and life is either expressly set down in Scripture or by good and necessary consequence may be deduced from Scripture: to this nothing at any time is to be added, whether by new revelation of the Spirit or by human tradition.

We believe in one God existing in three co-eternal Persons: Father, Son and Holy Spirit.

We believe that Jesus Christ, the eternal Son of God, was conceived by the Holy Spirit, born of Mary when she was a virgin and is true God and true man.

We believe that humanity was created in the image of God, but sinned through the fall of Adam, thereby incurring not only physical death but also spiritual death, which is separation from God; and that all human beings are born with a sinful nature and become sinners in thought, word and deed.

We believe that the Lord Jesus Christ died a propitiatory and expiatory death as a representative and substitutionary sacrifice and that all who repent of their sins and believe in Him are justified before God on the grounds of His death and resurrection.

We believe in the bodily resurrection of our Lord Jesus Christ, in His ascension into Heaven and in His exaltation at the right hand of God, where He intercedes for us as our High Priest and Advocate.

We believe in the personal, visible and imminent return of our Lord and Saviour Jesus Christ.

We believe that the ministry of the Holy Spirit is to glorify the Lord Jesus Christ and to convict and regenerate the sinner, indwell, guide, instruct and empower the believer for godly living and service.

We believe that Christ instituted the Sacrament of Baptism and the Lord's Supper, which shall be observed by His Church till He returns.

We believe in the eternal security, bodily resurrection and eternal blessedness of the saved, and in the bodily resurrection and eternal punishment of the lost.

We believe that the universal church possesses a spiritual unity and purity realised in the Headship of Christ over His Church, and in the church being the Body of Christ.

# BGST Lifelong Learning

We live in a disruptive and complex world, where the challenges and concerns of our marketplaces change rapidly.

To help Christians integrate and apply their faith continually, BGST offers an extensive lifelong learning pathway. Students can start from short 2-hour micro-learning courses or 1-4 months long Ministry Skills formation modules. They can also equip themselves through our modular postgraduate courses, which are stackable from our Graduate Certificates to our Master of Divinity programmes.

## Holistic Curriculum

---

To equip Christians to become ambassadors for Christ in their marketplaces, BGST offers a holistic curriculum that forms them theologically, spiritually, and in their ministry skills.

### 1. Theological Formation

Developing the ability to interpret and obey Scripture, understand our rich Christian traditions, and apply their learning in their diverse marketplaces.

### 2. Spiritual Formation

Cultivating an intimate relationship with Christ, motivated by God's love, and discern His Spirit's guidance as they work, serve, and lead in their marketplaces.

### 3. Ministry Skills Formation

Acquiring the skills to lead well, communicate effectively, and minister winsomely as they engage the concerns of their marketplaces.

## Adaptive Learning Approaches

---

BGST's adaptive educational approaches are designed to equip Ambassadors for Christ as they work, serve, and live out their faith in their marketplaces.

### 1. Flexible

BGST adopts a range of learning modes, from 'live' classes (both in-person or online), blended/hybrid learning, or self-paced online learning. 'Live' classes are offered during evenings or Saturday weekends. Classes are modular and stackable towards accredited programmes.

### 2. Contextualised

BGST adopts different adult learning approaches - including case studies, group projects, mentoring, coaching and spiritual direction - to help our students apply their learning to their marketplaces.

### 3. Integrative

BGST devotes two-thirds of every course and curriculum to content learning, and the remaining one-third to Theological Application and Practice (TAP), that is, learning how to engage church ministry, marketplace concerns, and contemporary societal issues.

# Accreditation & Recognition



## Accreditation

The BGST programmes listed here are accredited by the Asia Theological Association.

### **GDCS**

Graduate Diploma in  
Christian Studies

### **GDCM**

Graduate Diploma in  
Christian Ministry

### **GDMS**

Graduate Diploma in  
Missions Studies

### **MATIS**

Master of Arts in Theology  
and Integrative Studies\*

### **MDiv**

Master of Divinity

*\*Note: From AY2023, MATIS has been renamed from Master of Arts in Theology and Inter-disciplinary Studies to Master of Arts in Theology and Integrative Studies.*

## Recognition

BGST is recognised by the Ministry of Education as a private school offering religious education. We can accept foreign students for full or part-time studies. While keeping our autonomous status, we are open to a fraternal relationship with other theological schools which share our mission and goals and our theological position.

As the above programs are accredited by the Asia Theological Association, they are recognized worldwide by other reputable theological schools. Please contact us at [contact@bgst.edu.sg](mailto:contact@bgst.edu.sg) for issues relating to credit transfer to/from BGST.

# BGST Team

## Council

The Council is responsible for the overall direction, staffing and finances of the School.



MR BARNEY LAU  
Chairman



MR CHIANG WEN WEI  
Vice-Chairman



MR BRIAN CHEW  
Treasurer  
Chair, FC



DR LAI PAK WAH  
Secretary  
Ex-officio Member



MS AMY ANG  
Chair, GNHRC



MS DAWN YIP  
Member, GNHRC



MR HO WEI HAO  
Member

GNHRC  
*Governance, Nomination  
and Human Resource  
Committee*

FC  
*Finance Committee*

## Executive Team



DR LAI PAK WAH  
Principal & Dean



MS LYNN YONG  
Head,  
Administrative Services



DR TAN SENG KONG  
Head,  
Shared Services

# BGST Team

## Staff



**MS DAISY SIM**  
Manager,  
Finance Services



**MR EDWIN CHOY**  
Manager,  
Digital Media & Planning



**MS ANGELINE NEO**  
Manager,  
Advancement



**MR ANTHONY SIOW**  
Manager,  
Centre for Spiritual  
Formation



**MS JANICE CHERN**  
Assistant Manager,  
Centre for Spiritual  
Formation



**MR HOR GUO YI**  
Manager,  
Centre for Equipping &  
Discipleship



**MS JANICE MUNGCAL**  
Executive,  
Academic & Resources



**MS SARAH PHUA**  
Associate,  
Accounts



**MS KRISTINE KOMLOSY**  
Associate,  
Publicity & Graphics Design

# Faculty

The Faculty is responsible for the academic programmes of BGST. The Principal supervises the work of the Faculty comprising lecturers, mentors and tutors.

## Resident Faculty



DR LAI PAK WAH  
Principal,  
Dean & Lecturer,  
Church History and  
Marketplace Theology



DR TAN SENG KONG  
Lecturer,  
Christian Theology  
and Spiritual  
Formation



DR QUEK TZE-MING  
Registrar & Lecturer,  
New Testament and  
Integrative Studies



DR SUN JIA NI  
Assistant Lecturer,  
Old Testament



MR HOR GUO YI  
Manager,  
Centre for Equipping &  
Discipleship



REV DR LIM KAR YONG  
Lecturer,  
New Testament and  
Learning Journeys

# Spiritual Mentors



MR ANTHONY SIOW



MS ANITA YAP



MS SEAH CHIEW KWAN



DR TONG MEE ON



REV CHENG ENG HWA



DR CHAN LIN HO



MRS PRISCILLA CHUA

# Associate Lecturers



DR PHILIP  
SATTERTHWAITE



DR TAN KOK CHOON



DR CLIVE LIM



DR SUZANNE CHOO



DR NOEL CHEONG



MS DAWN YIP



REV DR TAN  
SOO-INN



DR MARIE JOY PRING



MR CHNG EU-LEE



DR JASMINE FOO



MR LOW KWANG MENG



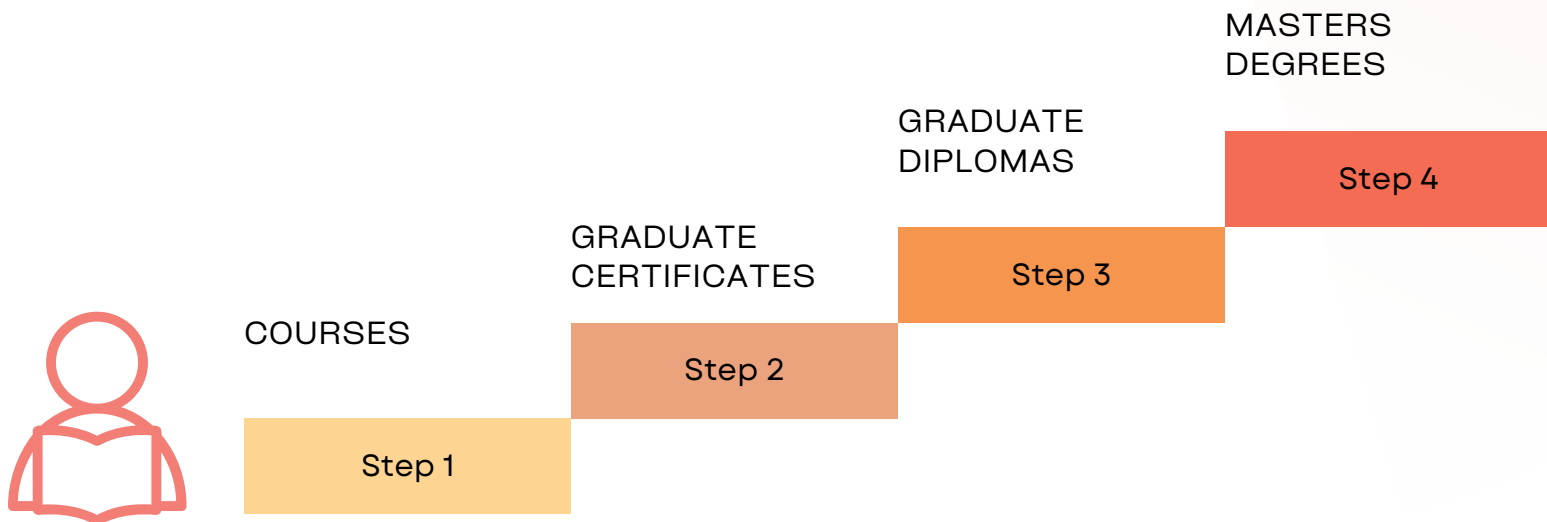
MR HO WEI HAO



REV STANLEY TAY

# POSTGRADUATE PROGRAMME CURRICULUM

As Christians grow in our faith, we need to deepen and broaden our theological, spiritual, and ministry skills formation, so that we can better integrate our faith with our work, church ministry, and societal engagements.

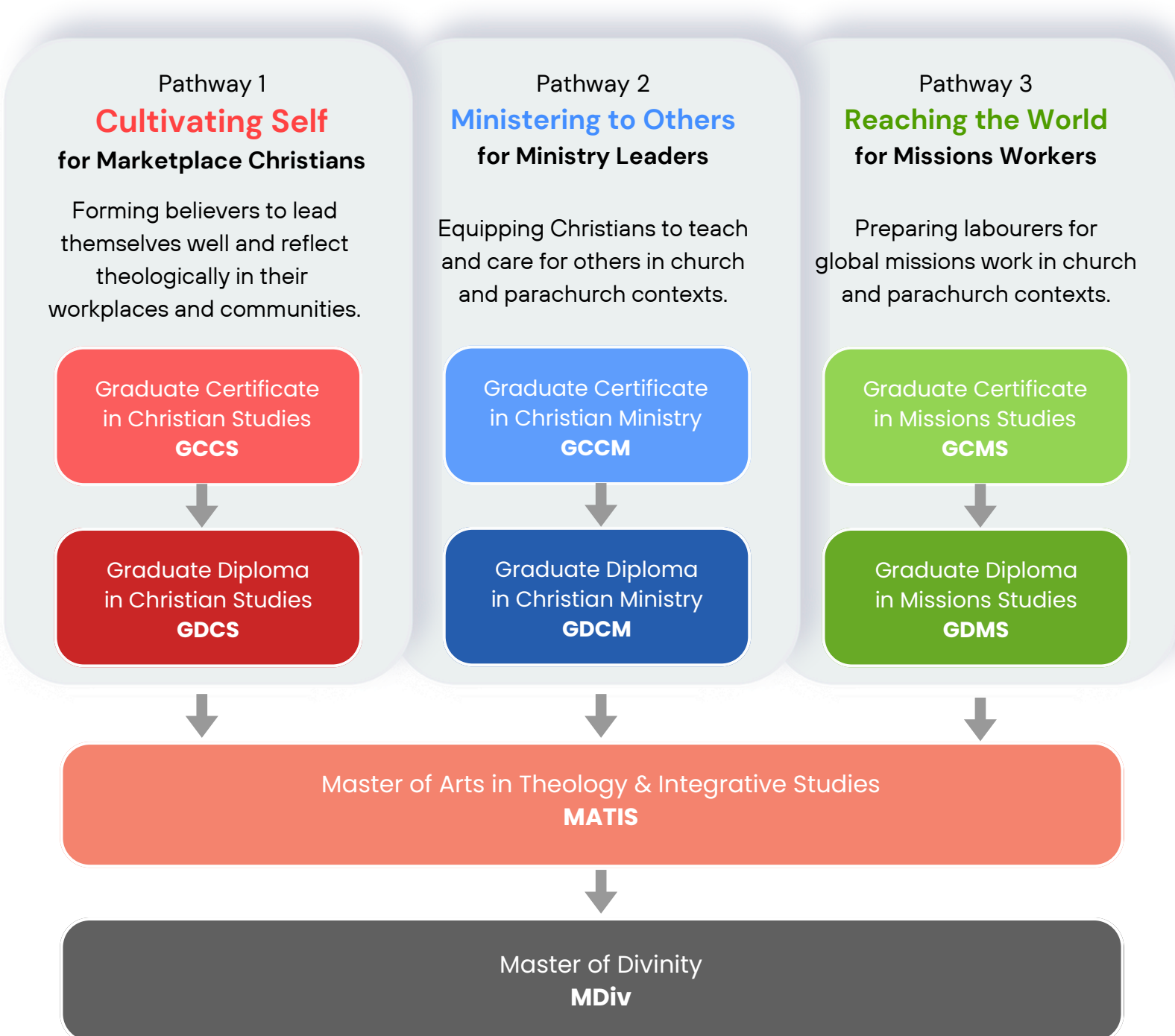


BGST's Centre for Postgraduate Studies is designed to support this. You can begin your journey with us by taking either a course, or one of our Graduate Certificates or Graduate Diplomas. Each of these courses and Graduate programmes are stackable and allows you to transfer your academic units and progress to BGST's Masters degrees. The aim is always to provide maximum flexibility to enable you to learn at your own pace and develop yourselves over time.

# LEARNING PATHWAYS

## BGST ASPIRES TO BE MORE THAN A SEMINARY.

To do so, we are streamlining our Graduate Certificates and Graduate Diplomas into three clear, intentional pathways to serve marketplace Christians, ministry leaders, and missions workers more effectively.



PATHWAY 1: CULTIVATING SELF - FOR MARKETPLACE CHRISTIANS

# Graduate Certificate in Christian Studies GCCS

The Graduate Certificate in Christian Studies (GCCS) is designed for Christians who want to deepen their faith and live it out meaningfully in the marketplace, community, and everyday life. Whether you're a working professional, lay leader, or someone seeking to integrate faith with real-world concerns, this programme offers a thoughtful and formational journey.

## Programme Highlights

### 5 core courses

where you'll engage Scripture, theology, identity and calling - while growing in spiritual and emotional depth.

### Choose from a broad selection of electives

to shape a unique learning path aligned to your calling and context.

### Designed for busy Christians

offering flexible, formational, and marketplace-relevant training.

## Graduate Certificate in Christian Studies GCCS 15 AU

### GCCS Core (10.5AU)

#### HE101

(3 AU)

Biblical  
Hermeneutics  
& Interpretation

#### TS101

(3 AU)

Christian Theology  
for Everyday Life

#### CS102

(1.5 AU)

Christian  
Spirituality 2

#### IS100

(1.5 AU)

Everyday  
Christianity

#### MM100

(1.5 AU)

Discerning  
Your Life

### GCCS Electives (4.5 AU)

#### MM101

(1.5 AU)

Marketplace  
Discipleship and  
Ministry

**FREE  
ELECTIVES**  
(3 AU)

PATHWAY 1: CULTIVATING SELF - FOR MARKETPLACE CHRISTIANS

# Graduate Diploma in Christian Studies

## GDCS

The Graduate Diploma in Christian Studies (GDCS) builds on the foundations of the GCCS, offering deeper theological formation and practical engagement for those seeking to live out their faith thoughtfully across diverse life contexts. Whether you're exploring a call to ministry, leading in the workplace, or serving your community, GDCS provides the tools to integrate faith and life meaningfully.

### Programme Highlights

#### 4 core courses

in Bible, history, and discipleship, grounding you in Scripture and the Christian tradition.

#### Choose from a broad selection of electives

in ministry and cultural engagement, with additional free electives to tailor your learning.

#### Designed for Christians navigating today's complex world

offering flexible, formational training for life, ministry, and work.

**GCCS**  
**15 AU**

+

**GDCS**  
**15 AU**

=

**30 AU**

Needed for  
GDCS Certification

### GDCS Core (10.5AU)

**OT101**  
(3 AU)

Old Testament  
Foundations 1

**NT101**  
(3 AU)

New Testament  
Foundations 1

**CH101**  
(3 AU)

Christian History,  
Thought, and  
Culture 1

\* **MM101**  
(1.5 AU)

Marketplace  
Discipleship and  
Ministry

### GDCS Electives (4.5 AU)

**MS101**  
(1.5 AU)

Foundations for  
Christian Ministry

**IS101**  
(3 AU)

Christianity,  
Culture, and  
Society

**FREE  
ELECTIVE\***  
(1.5 AU)

\*MM101 is already completed as part of GCCS. Students may choose a free elective here.

PATHWAY 2: MINISTERING TO OTHERS - FOR MINISTRY LEADERS

# Graduate Certificate in Christian Ministry GCCM

The Graduate Certificate in Christian Ministry (GCCM) is designed for Christians who are serving – or preparing to serve – in church or ministry leadership. It offers biblical and theological grounding, spiritual formation, and practical ministry skills to support sustainable, Christ-centred service.

## Programme Highlights

### 5 core courses

to build a strong foundation through 5 core courses on Scripture, theology, identity, calling, and formation.

### Develop practical skills

in the basics of Christian ministry and pastoral care.

### Customise your learning with electives

relevant to your ministry context or interest.

## Graduate Certificate in Christian Ministry GCCM 15 AU

### GCCM Core (10.5AU)

#### HE101

(3 AU)

Biblical  
Hermeneutics  
& Interpretation

#### TS101

(3 AU)

Christian Theology  
for Everyday Life

#### CS102

(1.5 AU)

Christian  
Spirituality 2

#### IS100

(1.5 AU)

Everyday  
Christianity

#### MM100

(1.5 AU)

Discerning  
Your Life

### GCCM Electives (4.5 AU)

#### MS101\*

(1.5 AU)

Foundations for  
Christian Ministry

#### MS131

(1.5 AU)

Pastoral Care 1:  
Ministry in  
Daily Life

#### MS132

(1.5 AU)

Pastoral Care 2:  
End of Life Issues

\* Students on the  
Chaplaincy  
Concentration Track  
will take CSA  
instead of MS101.

PATHWAY 2: MINISTERING TO OTHERS - FOR MINISTRY LEADERS

# Graduate Diploma in Christian Ministry

## GDCM

The Graduate Diploma in Christian Ministry (GDCM) builds on the foundation of the GCCM, offering deeper formation for those serving in church or ministry settings. Whether you're a pastor, ministry worker, or chaplain, GDCM strengthens both heart and hands for long-term, faithful leadership.

### Programme Highlights

**Core courses in Scripture, church history, and discipleship**  
that ground you theologically and spiritually.

**Specialised electives**  
in pastoral care, contextual ministry, and ministry foundations

**Combines theological depth with practical training**  
to support faithful ministry in diverse settings.

**GCCM**  
15 AU

+

**GDCM**  
15 AU

=

**30 AU**  
Needed for  
GDCM Certification

### GDCM Core (10.5AU)

**OT101**  
(3 AU)

Old Testament Foundations 1

**NT101**  
(3 AU)

New Testament Foundations 1

**CH101**  
(3 AU)

Christian History, Thought, and Culture 1

**MM101\***  
(1.5 AU)

Marketplace Discipleship and Ministry

### GDCM Electives (4.5 AU)

**IS211**  
(3 AU)

Navigating Christian Life in Multi-Religious Asia

**FREE ELECTIVE\***  
(1.5 AU)

\*For students on the Chaplaincy Concentration Track, TS111 (3 AU) replaces both MM101 (1.5 AU) & Free elective 1.5 AU.

PATHWAY 2: MINISTERING TO OTHERS - FOR MINISTRY LEADERS

# Graduate Certificate in Missions Studies GCMS

The Graduate Certificate in Missions Studies (GCMS) is designed for Christians exploring a call to missions or preparing to serve in cross-cultural ministry. It equips you with a foundation in biblical and cultural exegesis, a space to develop spirituality and discernment, and a wide perspective about missions in the 21st century.

## Programme Highlights

**Learn from missions practitioners and partner agencies**  
through co-taught courses and practicum trips that integrate your learning.

**Complemented with BGST's expertise**  
in integrative theology, spiritual formation, and leadership.

**2 years**  
Complete this short 15-credit programme part-time within 2 years.

## Graduate Certificate in Missions Studies GCMS 15 AU

### GCMS Core (10.5AU)

**HE101**

(3 AU)

Biblical  
Hermeneutics  
& Interpretation

**TS101**

(3 AU)

Christian Theology  
for Everyday Life

**CS103**

(1.5 AU)

Christian  
Spirituality Retreat  
(GCMS)

**IS100**

(1.5 AU)

Everyday  
Christianity

**MM100**

(1.5 AU)

Discerning  
Your Life

### GCMS Electives (4.5 AU)

**ME101**

(1.5 AU)

History & Theology  
of Missions

**ME102**

(1.5 AU)

Dimensions of  
21<sup>st</sup> Century  
Missions

**ME211**

(1.5 AU)

Cross-Cultural  
Missions Practicum

PATHWAY 2: MINISTERING TO OTHERS - FOR MINISTRY LEADERS

# Graduate Diploma in Missions Studies

## GDMS

The Graduate Diploma in Missions Studies (GDMS) builds on the foundation of the GCMS, offering deeper theological training and practical preparation for those called to global or cross-cultural ministry. Ideal for mission practitioners and church leaders, GDMS prepares you to navigate today’s complex missions landscape with wisdom and conviction.

### Programme Highlights

**Core courses in Scripture, church history, and discipleship**

that ground your missional call theologically and spiritually.

**Specialised electives**

in mission theology, global trends, and intercultural engagement, with a hands-on cross-cultural practicum.

**Elective options**

help you shape a learning path that aligns with your unique missional calling and context.

**GCMS**  
15 AU

+

**GDMS**  
15 AU

=

**30 AU**  
Needed for  
GDMS Certification

### GDMS Core (10.5AU)

**OT101**  
(3 AU)

Old Testament Foundations 1

**NT101**  
(3 AU)

New Testament Foundations 1

**CH101**  
(3 AU)

Christian History, Thought, and Culture 1

**MM101**  
(1.5 AU)

Marketplace Discipleship and Ministry

### GDMS Electives (4.5 AU)

**MS101**  
(1.5 AU)

Foundations for Christian Ministry

**IS101**  
(3 AU)

Christianity, Culture & Society  
or  
**ME Electives**  
(3 AU)

# Master of Arts in Theology and Integrative Studies

## MATIS

The Master of Arts in Theology and Integrative Studies (MATIS) is our current flagship master’s degree for lay theological education. This programme develops the theological and integrative competencies of our Graduate Diploma graduates and their ability to apply their learning to engage their marketplaces. All graduates are:

1. Competent in interpreting Scripture, Christian Traditions and Spirituality, and Integrative Studies, and integrating these learning foci.
2. Able to nurture themselves and others in Christ-likeness to live out their calling at work, church, and society.

To help our students apply their learning and develop their ministry skills, the MATIS devotes 35% (21 AU) of its curriculum to Theological Application and Practice (TAP).

## Ministry Research Project or Research Thesis Options

While students can complete their MATIS entirely by course work, they can also undertake a Ministry Research Project or a Research Thesis as part of their programme requirements. They can do so by devoting 6 academic units of electives to their thesis. Specifically, they must first complete a Guided Study (1.5 AU) to understand and identify the scope of their project or thesis, before embarking on the project and thesis itself (4.5 AU). With this option, students should note that they will need to complete 1.5 AU more electives than what is required in the MATIS (4.5 AU).

<b>1. MINISTRY RESEARCH PROJECT</b>	<b>Or</b>	<b>2. RESEARCH THESIS</b>
Guided Study Elective 1.5 AU  Ministry Research Project (TH393) 4.5 AU		Guided Study Elective 1.5 AU  Research Thesis (TH395) 4.5 AU
<b>Total Units: 6 AU</b>		<b>Total Units: 6 AU</b>

Students can take up to 6 academic units of practicum academic units (including CS102 and other Ministry Skills electives). A practicum course is graded pass or fail and will not contribute to the overall GPA of the programme. Practicum courses will be indicated in the Course Schedule when offered.

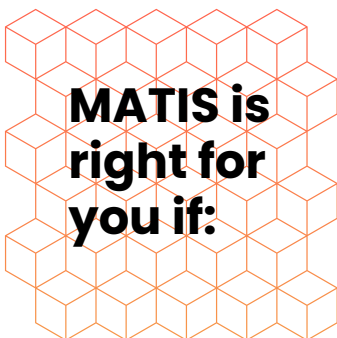
# Master of Arts in Theology and Integrative Studies

## MATIS

Note: MATIS used to be called Master of Arts in Theology and Inter-disciplinary Studies. The term 'Integrative' has now been adopted instead. 'Integrative' allows for some disciplines to be more important than others. The use of this term enables BGST to emphasise that while (i) robust theological application requires one to become inter-disciplinary, (ii) the Bible remains primary discipline out of the many.

MATIS is renamed from and replaces MCS. Both degrees are accredited by the Asian Theological Association. MCS graduates are not required to exchange their degrees.

MATIS graduates will be competent in engaging Scripture, Christian Tradition (including Church History, and Spiritual Discernment) and Integrative Studies. They will learn to nurture themselves and others in Christ-likeness to live out their calling in the church and the marketplace.



- You are in the marketplace and want to grow your understanding of the Christian faith.
- You are looking for comprehensive theological training with both depth and breadth.
- You are exploring leadership roles in your church and in other ministries.



### Duration

**2 Years**

Full-Time

**6 Years**

Part-time



### MATIS is stackable to:

**MDiv**

Master of Divinity

COURSE CODE	CORE COURSES	ACADEMIC UNITS (AU)
-------------	--------------	---------------------

**Scripture**

<b>OT101</b>	Old Testament Foundations 1	3
<b>OT102</b>	Old Testament Foundations 2	3
<b>NT101</b>	New Testament Foundations 1	3
<b>NT102</b>	New Testament Foundations 2	3
<b>HE101</b>	Biblical Hermeneutics and Interpretation	3

**Tradition**

<b>CH101</b>	Christian History, Thought and Culture 1	3
<b>CH102</b>	Christian History, Thought and Culture 2	3
<b>TS101</b>	Christian Theology for Everyday Life	3
<b>TS211 or TS212</b>	Christian Theology 1 or 2	3
<b>CS101</b>	Christian Spirituality 1	1.5
<b>CS102</b>	Christian Spirituality 2: Practicum (Practicum Credit)	1.5
	Any Other Christian Spirituality (CS) Elective(s)	3

**Integrative Studies**

<b>IS100</b>	Everyday Christianity	1.5
<b>IS101</b>	Christianity, Culture and Society	3
<b>IS211 OR IS212</b>	Navigating Christian Life in Multi-Religious Asia or Philosophies Shaping #21C Asia	3
<b>IS/MM252</b>	Ethics for the Marketplace in Asia	3
<b>MM100</b>	Discerning Your Life	1.5
<b>MM101</b>	Marketplace Discipleship and Ministry	1.5
<b>MM103</b>	Christians in a Disruptive & Digital World	1.5
<b>MM211</b>	Marketplace Integration Capstone	1.5
	Any Integrative Studies (IS) Elective	1.5
	Any Ministry Skills (MS) elective such as teaching, preaching, and/or leadership electives. This includes BGST's Leadership Certificate programmes. Some MS electives may be practicum academic units.	4.5

**ELECTIVE COURSES**

From Any Subject Areas	4.5
------------------------	-----

**55.5 AU**

Core Courses

**4.5 AU**

Elective Courses

**60 AU**

Total AUs Needed for MATIS Accreditation

# Master of Divinity

## MDiv

The Master of Divinity (MDiv) builds on the MATIS competencies to develop our students into skilled pastoral leaders, capable of leading churches and Christian communities. Its specific aims are two-fold: (a) to enable our MATIS graduates to stack up their ministry and pastoral skills training and prepare for the pastoral vocation; and (b) to provide them with the biblical language competencies and a range of pastoral skills to minister effectively.

All MDiv graduates are:

1. Skilled pastoral leaders who effectively expound Scripture and Christian traditions, and to draw on integrative studies for leading their churches and communities.
2. Able to nurture themselves and lead others in Christ-likeness to live out their calling at work, church, and society.

The Biblical language requirement for MDiv is for 1.5 years (9 AU) of studies in either Biblical Hebrew (BH111, BH112, and BH211) or Biblical Greek (BG111, BG112, and BG211). Students also have the option to take a combination track where they take any 9 academic units of BH111, BH112, BG111/BG112. It is recommended for students to commence **either** Biblical Hebrew or Biblical Greek early in their programme of studies.

To equip our students with the ability to apply their learning and engage their stakeholders winsomely, 40% (36 AU) of the MDiv is devoted to Theological Application and Practice (TAP).



- You are looking for a robust programme with breadth and depth to be better equipped to serve.
- You want to be more thoroughly equipped as a pastoral leader.
- You are considering a leadership position within your church or in other ministries.

COURSE CODE	CORE COURSES	ACADEMIC UNITS (AU)
<b>Scripture</b>		
<b>OT101</b>	Old Testament Foundations 1	3
<b>OT102</b>	Old Testament Foundations 2	3
<b>NT101</b>	New Testament Foundations 1	3
<b>NT102</b>	New Testament Foundations 2	3
<b>HE101</b>	Biblical Hermeneutics and Interpretation	3
<b>Biblical Languages</b>		
<b>Either Hebrew Track</b>		
<b>BH111</b>	Biblical Hebrew 1	3
<b>BH112</b>	Biblical Hebrew 2	3
<b>BH211</b>	Biblical Hebrew Readings	3
<b>or Greek Track</b>		
<b>BG111</b>	Biblical Greek 1	3
<b>BG112</b>	Biblical Greek 2	3
<b>BG211</b>	Biblical Greek Readings	3
<b>or Introductory Combination Track</b>		
<b>BH111</b> <b>BH112</b> <b>BG111</b> <b>BG112</b>	Any 3 courses of BH 111, BH 112, BG 111 / BG 112: Biblical Hebrew 1 Biblical Hebrew 2 Biblical Greek 1 Biblical Greek 2	9
<b>Tradition</b>		
<b>CH101</b>	Christian History, Thought and Culture 1	3
<b>CH102</b>	Christian History, Thought and Culture 2	3
<b>TS101</b>	Christian Theology for Everyday Life	3
<b>TS211 or TS212</b>	Christian Theology 1	3
<b>TS212</b>	Christian Theology 2	3
<b>CS101</b>	Christian Spirituality 1	1.5
<b>CS102</b>	Christian Spirituality 2: Practicum (Practicum AU)	1.5
<b>CS/MS112 or MS111</b>	Spiritual Care and Direction (Practicum AU) or Basic Counselling Skills (Practicum AU)	3
	Any Other Christian Spirituality (CS) Elective(s)	3

COURSE CODE	CORE COURSES	ACADEMIC UNITS (AU)
<b><i>Integrative Studies</i></b>		
<b>IS100</b>	Everyday Christianity	1.5
<b>IS101</b>	Christianity, Culture and Society	3
<b>IS211 OR IS212</b>	Navigating Christian Life in Multi-Religious or Philosophies Shaping #21C Asia	3
<b>IS/MM252</b>	Ethics for the Marketplace in Asia	3
<b>MM100</b>	Discerning Your Life	1.5
<b>MM101</b>	Marketplace Discipleship and Ministry	1.5
<b>MM103</b>	Christians in a Disruptive & Digital World	1.5
<b>MM211</b>	Marketplace Integration Capstone	1.5
<b>MS101</b>	Foundations for Christian Ministry	1.5
<b>MS331</b>	Field Education	1.5
<b>IS121</b>	The Church in Mission	3
	Any Integrative Studies (IS) Elective	1.5
	Ministry Skills (MS) Courses. This includes at least:	
	<ul style="list-style-type: none"> <li>• 3 AU in MS121 Teaching and Learning or any other teaching and learning course;</li> <li>• 3 AU in MS221 Preaching in the Church or any other preaching course;</li> <li>• 1.5 AU in MS141 Worship and Liturgy or any other worship and liturgy course.</li> </ul>	7.5
	Any BGST Leadership Certificate	4.5
<b>ELECTIVE COURSES</b>		
	From Any Subject Areas	6

<b>84 AU</b> Core Courses	<b>6 AU</b> Elective Courses	<b>90 AU</b> Total AUs Needed for MDiv Accreditation
------------------------------	---------------------------------	---

# Revisions to Graduate Certificates and Diplomas (Effective 1 September 2025)

## Introduction

- 1.** To better partner churches in their training of marketplace Christians, ministry leaders and missional leaders, BGST is revising our Graduate Certificates and Diplomas (GCs and GDs) with effect from 1 September 2025. The new GCs and GDs will form three learning pathways to equip marketplace Christians, church ministry leaders and missionaries:

- Pathway 1: Equipping Self – for Marketplace Christians

To form and equip Christians to lead themselves well so that they can engage their workplaces and communities with better theological reflections.

- Pathway 2: Equipping for Ministry – for Church Ministry Leaders

To equip Christians to minister to others either in teaching and pastoral care in a church or parachurch context.

- Pathway 3: Equipping for Missions in the World – for Missionaries and Leaders

To equip Christians to engage in global missions in a church and parachurch context.

- 2.** To this end, we are launching a Graduate Certificate in Christian Studies (GCCS) and a Graduate Certificate in Christian Ministry (GCCM) to complement our existing Graduate Certificate in Missions Studies (GCMS). The GCCS and GCCM will replace our existing Graduate Certificates in Biblical Studies, Theological Studies and Spiritual Formation (GCBS, GCTS and GCSF) from 1 September 2025 onwards.

- 3. What does this mean for our existing students (or those working to the existing GCs)?**

Students enrolled in current GCs can continue their existing programmes and graduate upon completion. Upgrading to higher programs – GDs, MATIS and MDiv – will depend on what is being offered at the time of the upgrade. Alternatively, they can also convert their existing GCs into the new GCCS or GCCM.

Students who have yet to enrol in the GC programs are encouraged to enrol in the new GCCS, GCCM or GCMS instead. For exceptional considerations, please contact us at [contact.bgst.edu.sg](mailto:contact.bgst.edu.sg).

**4. When are the new GCCS and GCCM available for application?**

---

These would be available for application from 1 September 2025 onwards. All new students are strongly encouraged to enrol into the new GCCS, GCCM or GCMS instead.

**5. Legacy Programmes before 2025**

---

Existing students who are currently on our legacy Grad Cert & Grad Dip programmes can refer to our Legacy Programmes Information booklet for curriculum information.

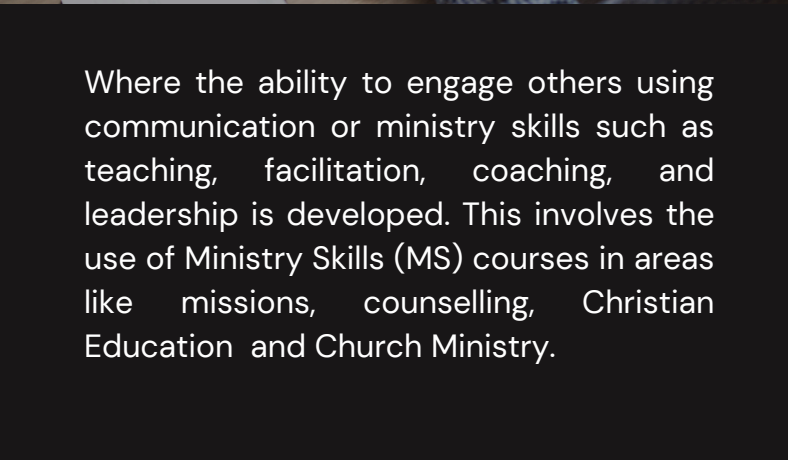
Legacy Programmes Information can be found at [bg.st/LegacyProgrammes](https://bg.st/LegacyProgrammes)

# Theological Application and Practice (TAP)

To equip our students to apply their learning and to engage others in a winsome manner, BGST devotes 1/3 of every course and curriculum to Theological Application and Practice (TAP). There are two components in TAP:



Where the ability to apply one's faith and theology is developed by enhancing our integrative studies training. This involves developing both Marketplace Ministry (MM) and Integrative Studies (IS) content and courses.



Where the ability to engage others using communication or ministry skills such as teaching, facilitation, coaching, and leadership is developed. This involves the use of Ministry Skills (MS) courses in areas like missions, counselling, Christian Education and Church Ministry.

**Engagement Learning**

Often, ministry skills are better formed through practicums.  
These may be delivered either as:

**Postgraduate Practicum Courses**

**Ministry Skills Formation Initiative**

See following pages for more details on practicum courses and BGST Centres.

## Progressive Integrative Learning Pathway

The design of BGST’s postgraduate programmes enables students to develop and deepen their theological application and practice (TAP) as they progress from the Graduate Certificate to the MATIS or MDiv. Every programme incorporates Marketplace Ministry (MM) and Integrative Studies (IS) to help students learn how to apply their faith to their everyday lives before progressing to the implications for their work, church, and society. Ministry Skill courses are also required from GDCS onwards to help students build a wide range of ministry and communication skills. The following illustrates the progression pathway from the Graduate Certificate to the MDiv.

<b>Programme</b>	<b>Marketplace Formation Focus</b>	<b>Marketplace Ministry</b>	<b>Integrative Studies</b>	<b>Ministry Skills</b>
<b>Grad Cert</b>	Personal	Discerning Your Life (MM100)	Everyday Christianity (IS100)	
<b>Grad Dip</b>	Workplace	Marketplace Discipleship and Ministry (MM101)	Christianity, Culture and Society (IS101)	Elective
<b>MATIS</b>	Society	Ethics for the Marketplace in Asia (MM252); Marketplace Integration Capstone	Navigating Being Christian in Multi-Religious Asia (IS211) Philosophies Shaping #21CAsia (IS212); IS Electives	Elective
<b>MDiv</b>	Church			Elective

## Practicum Training

While theological training requires a robust intellectual study of Scripture, Tradition, and Integrative Studies, it should be augmented with an emphasis on how the intellectual learning can be applied to the students' and their communities' day-to-day lives. For this reason, practicum training is emphasised in BGST's curriculum.

### Types of Practicum Courses

There are 3 types of practicum courses in BGST: MDiv Field Education (MS/CM311), some Christian Spirituality courses (e.g. CS102, CS105 and CS115) some Ministry Skills courses, and ME211 Missions Practicum. All Practicum courses are graded as Pass or Fail.

Some practicum courses are compulsory. CS102, for example, is required in all programmes. Field Education and Spiritual Care and Direction (CS112) / Basic Counselling Skills (CO101) is required for the MDiv programme. Others are offered as electives.

Students planning to take the Graduate Diplomas, MATIS or MDiv should note that the sum total of their practicum academic units cannot be more than 3, 6 and 9 academic units respectively (that is, 10% of the total programme academic units). This restriction does not apply to the Graduate Certificates.

Programme	Compulsory Practicum Courses	Additional Practicum AU Allowed
<b>Grad Cert</b>	CS102 (1.5 AU) CS 103 & MS211 for GCMS	1.5 AU
<b>Grad Dip</b>	CS102 (1.5 AU) CS 103 & MS211 for GDMS	1.5 AU none for GDMS
<b>MATIS</b>	CS102 (1.5 AU)	4.5 AU
<b>MDiv</b>	CS102 (1.5 AU) MS/CM311 (1.5 AU) CS112/CO101 (3 AU)	3 AU

# Christian Spirituality and Ministry Skills Practicum

## 1. Christian Spirituality Practicum Courses

---

Christian Spirituality and Formation is a key emphasis in BGST's training. We provide a wide range of courses (such as CS102, CS211 and CS212) to help our students deepen their love for God. Students who complete them will be awarded course academic units.

The school recognises, however, that spiritual growth requires more than just an intellectual study of the Christian spiritual traditions. More importantly, students must engage in spiritual disciplines and prayer in a prolonged period, often guided by a spiritual mentor. For this reason, some of our Christian Spirituality courses are offered as practicum academic units (e.g. CS102).

## 2. Ministry Skills Practicum Courses

---

To become effective ambassadors of Christ, students must not only develop their theological competency and learn how to apply these at work and church, but also develop the skills of engaging their communities in a winsome manner. This requires ministry skills training that, sometimes, require prolonged practice rather than essay writing. For example, learning how to facilitate conversations, coaching or counselling. For these reasons, some ministry skill electives will be offered as practicum academic units.

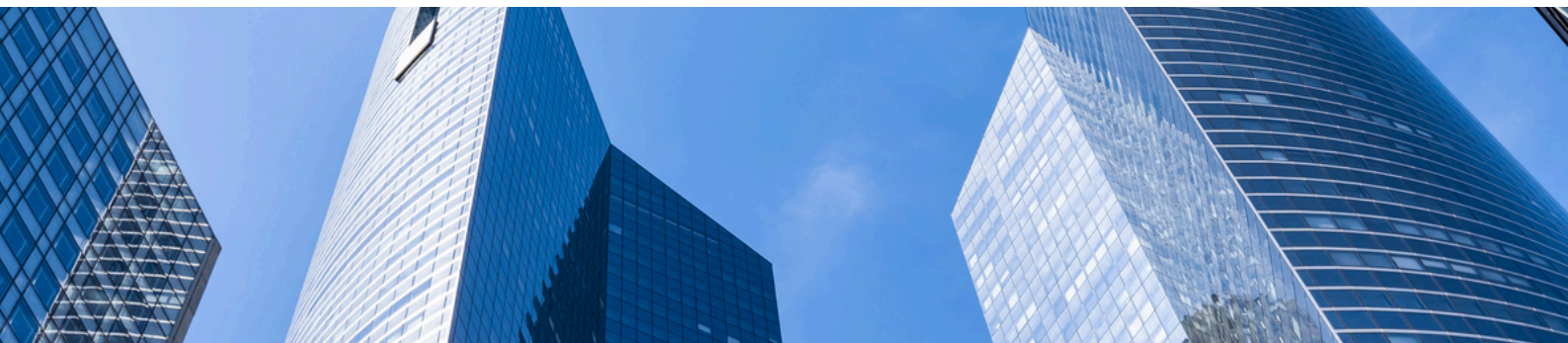
## Ministry Skills Formation

BGST recognises that ministry skills training is important to equip marketplace professionals to apply and communicate their faith. These include skills like leadership, facilitation, teaching, coaching, spiritual accompaniment, engaging contemporary issues, etc. Such training, however, is practical-oriented and requires a blended pedagogy. That is, to integrate theological, spiritual, and practical-experiential approaches in the learning process.

To support such formation, BGST has launched the Centres for Christian Leadership and Spiritual Formation (CCL and CSF) to offer such hybridised training (which may not fit the traditional requirements of our postgraduate courses).

As and when possible, and to provide flexibility for our postgraduate students, we benchmark the Centres' certificates to the Asian Theological Association (ATA) postgraduate requirements for course academic units. This is to allow our students to transfer their Certificates towards the fulfilment of their postgraduate requirements.

# BGST CENTRES



## Church and Discipleship Challenges for the 21st Century

The 21st century heralds accelerated change and complexity. Technology's rapid advancement reshapes our lives, work, and relationships. Geopolitical tensions and rising tribalism fuel conflicts among nations and peoples. Meanwhile, climate change amplifies threats like floods, droughts, and resource depletion.

In churches, pastors grapple with declining congregations due to aging populations and a concerning dropout rate among youths and young adults. They juggle pastoral care, mentoring, and the demands of weekly worship services and ministry. These factors converge, intensifying the challenge of discipling and equipping Christians for the modern marketplace.

## Partnering Churches to Develop Marketplace Leaders and Disciples

BGST understands these challenges. Since 1989, BGST has been equipping Christians to do so by offering a wide range of marketplace-oriented postgraduate programmes. We firmly believe that churches hold the key to inspiring and equipping Christians to become agents of transformation in their marketplaces – at their workplaces, churches, and the communities they serve in.

To actively support and collaborate with churches in this vital mission, BGST is extending beyond our postgraduate focus and transforming ourselves to become a Lifelong Learning and Development Centre, for churches in Singapore and the region. Our aim is to provide educational content, resources, and equipping pathways, enabling church leaders and pastors to allocate their efforts towards other critical aspects of their ministries.

To this end, in 2024, BGST restructured its postgraduate offerings into the Centre for Postgraduate Studies, and also launched 3 new Centres:



## Centre for Spiritual Formation **CSF**

Provide the spiritual formation training necessary for developing the self-leadership of pastoral, church and marketplace leaders. This is to be achieved primarily by offering spiritual direction, retreats, formation practicums and spiritual accompaniment training.



## Centre for Equipping & Discipleship **CED**

Provide a holistic, multi-pathway equipping ecosystem for marketplace discipleship and ministry. This is to assist churches in lifelong discipleship of their members. Using digital microlearning courses, coupled with discussion and reflection questions that can be deployed in church small groups, this holistic ecosystem will include resources on biblical, theological, spiritual, marketplace-cultural and ministry skills formation.



## Centre for Christian Leadership **CCL**

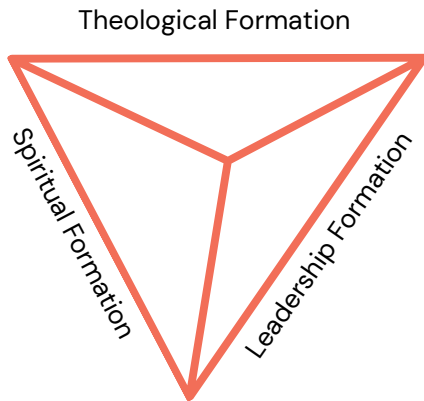
Provide leadership formation theology, frameworks, and practices to equip Christians to lead well both in churches and their marketplaces. That is, to provide the leadership needed to organise discipleship well in churches. This is to be achieved chiefly through the development of a foundational Christian leadership programme and short modules.

We are progressively developing and releasing offerings under each centre.

To find out more, write to us at [contact@bgst.edu.sg](mailto:contact@bgst.edu.sg).

# Integrative Discipleship Framework

## 3 Spheres of Formation



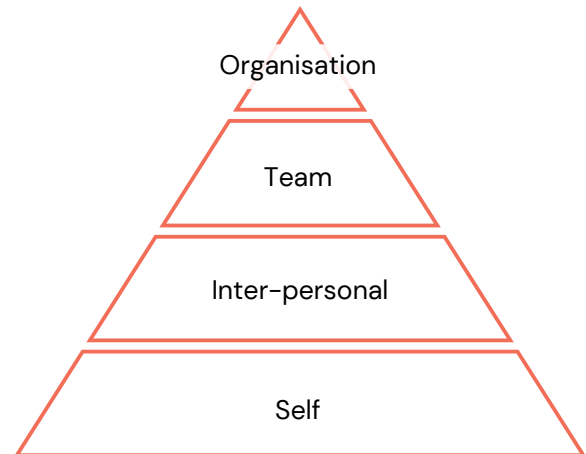
To become effective marketplace leaders and disciples, Christians need theological, spiritual, and leadership formation to develop an integrative discipleship.

**i. Theological Formation** equips Christians with the ability to interpret the Bible, a knowledge of the rich Christian traditions, and the ability to apply both to address the contemporary concerns of our culture, society, and the marketplace (i.e. integration of faith, work, and life).

**ii. Spiritual Formation** equips Christians with the frameworks and skills needed to grow and mature as Christians, to lean deeper on Christ’s love as the basis for their work and life, as guided by the Bible and our rich Christian heritage. This is the essential foundation for their self-leadership.

**iii. Leadership Formation** equips Christians with the frameworks, skills, and practices to lead well in their sphere of influence so that they can be a positive testimony and to others and influence them to flourish.

## Formation Levels



This three-fold formation operates at 4 different levels:

**1. Self** – where one addresses issues concerning his or her work and life. The integration of the three formations constitutes one’s discipleship.

**2. Inter-personal** – where one learns to relate, influence, and lead others.

**3. Team** – where one addresses issues and relational dynamics that affect the performance of teams.

**4. Organisation** – where one addresses issues concerning the strategic directions and the design and development of the entire organisation. Also included here are the organisation’s responsibilities in the industry or society where it is engaged.

**I. CCL** focuses on Christian Leadership Formation at all levels from Self to Organisation.

**II. CSF** focuses on Spiritual Formation up to the Interpersonal Level.

**III. CED** focuses on three spheres of formation from the Self to Team Levels.

## Transfer of Academic Units into the Postgraduate System

When a CCL or CSF Certificate is listed as transferable, its workload will be equivalent to at least 1 academic unit (AU) of postgraduate free elective (or 40 hours of academic work). Typically, such academic work includes class time or lectures, assignments, and readings. This academic unit can be transferred to BGST's postgraduate studies upon fulfilment of the module requirements.

For ease of transfer, these Certificates and some CCL or CSF modules are packaged in terms of 1.5, 3 or 4.5 AU. This will be stated in each module or certificate.

In the event that a module consists only of 1 AU, it must be accumulated with other modules for ease of the transfer of AUs. So, two modules of 1 AU each can offset one 1.5 AU of postgraduate elective.

For modules that do not fulfil course credit requirements (due to their practical nature), these can be transferred to the postgraduate system as Practicum AUs. Each CCL or CSF Certificate or module will indicate whether it can be transferred as a course or practicum credit. Students should note the maximum number of practicum academic units they can earn for a degree programme.

The **Certificate in Spiritual Accompaniment (CSA)** offered by CSF is equivalent to 4.5 AU of workload hours. However, if transferred into the Postgraduate Programmes, the CSA is eligible to offset 1.5 AU of Practicum AUs.

The **ENGAGE Certificates in Leadership** offered by BGST from 2021–2023 will still be recognised for AU transfer (3 AU) to the postgraduate programmes. These Certificates have been discontinued, and we are in process of developing new leadership modules/certificates under the Centre for Christian Leadership.

To streamline our course offerings and to avoid misunderstandings, BGST uses the term "Academic Unit" ("AU") to refer to the workload required for all Postgraduate Courses. This replaces the previously used terms "credit hours" or "credits."

# Course Catalogue

BGST courses are categorised into 3 focus thrusts: Scripture, Tradition, and Integrative Studies. Following is a catalogue of core and elective courses categorised accordingly.

A. Scripture			B. Tradition		
<b>A1</b>	<b>OT</b>	<b>Old Testament Studies</b>	<b>B1</b>	<b>CH</b>	<b>Historical Studies</b>
A1.1	OT101	Old Testament Foundations 1	B1.1	CH101	Christian History, Thought and Culture 1
A1.2	OT102	Old Testament Foundations 2	B1.2	CH102	Christian History, Thought and Culture 2
A1.3	OT391	Old Testament Guided Study	B1.3	CH/CS260	The Roots of Christianity
			B1.4	CH391	Church History Guided Study
<b>A2</b>	<b>NT</b>	<b>New Testament Studies</b>	<b>B2</b>	<b>TS</b>	<b>Theological Studies</b>
A2.1	NT101	New Testament Foundations 1	B2.1	TS101	Christian Theology for Everyday Life
A2.2	NT102	New Testament Foundations 2	B2.2	TS211	Christian Theology 1
A2.3	NT220	The Reliability of the Gospels	B2.3	TS212	Christian Theology 2
A2.4	NT223	Formation and Discipleship in Mark's Gospel	B2.4	TS/IS230	Cultural Apologetics through Conversations
A2.5	NT231	Between the Testaments: 400 Not-So-Silent-Years	B2.5	TS/IS233	The Seamless Life
A2.6	NT/IS282	Jesus on the Silver Screen	B2.6	TS391	Theological Studies Guided Study
A2.7	NT364	Reading Revelation Ethically	B2.7	TS111	Theology of Chaplaincy
A2.8	NT391	New Testament Guided Study			
<b>A3</b>	<b>HE</b>	<b>Hermeneutics</b>	<b>B3</b>	<b>CS</b>	<b>Christian Spirituality</b>
A3.1	HE101	Biblical Hermeneutics and Interpretation	B3.1	CS101	Christian Spirituality 1
<b>A4</b>	<b>BH</b>	<b>Biblical Hebrew</b>	B3.2	CS102	Christian Spirituality 2: Practicum
A4.1	BH111	Biblical Hebrew 1	B3.3	CS105	Spiritual Disciplines for Self-Care
A4.2	BH112	Biblical Hebrew 2	B3.4	CS/CO112	Spiritual Care and Direction
A4.3	BH211	Biblical Hebrew Readings	B3.5	CS211	Christian Spiritual Classics for Today 1
			B3.6	CS212	Christian Spiritual Classics for Today 2
<b>A5</b>	<b>BG</b>	<b>Biblical Greek</b>	B3.7	CS/CH260	The Roots of Christianity
A5.1	BG111	Biblical Greek 1	B3.8	CS391	Christian Spirituality Guided Study
A5.2	BG112	Biblical Greek 2			
A5.3	BG211	Biblical Greek Readings			

# Course Catalogue

## C. Integrative Studies

<b>C1</b>	<b>IS</b>	<b>Integrative Studies</b>	<b>C3</b>	<b>MS</b>	<b>Ministry Skills</b>
C1.1	IS100	Everyday Christianity	C3.1	MS101	Foundations for Christian Ministry
C1.2	IS101	Christianity, Culture and Society	C3.2	MS111	Basic Counselling Skills
C1.3	IS121	The Church in Mission	C3.3	MS/CS112	Spiritual Care and Direction
C1.4	IS211	Navigating Being Christian in Multi-Religious Asia	C3.4	MS121	Teaching and Learning for Discipleship
C1.5	IS212	Philosophies Shaping #21CAsia	C3.5	MS141	Liturgy & Worship
C1.6	IS219	Intergenerational Ministry in the Singapore Church	C3.6	MS221	Preaching in the Church
C1.7	IS/TS230	Cultural Apologetics through Conversations	C3.7	MS/IS236	Theology of Music in Worship and Faith Formation
C1.8	IS/TS233	The Seamless Life	C3.8	MS331	Field Education
C1.9	IS/MS236	Theology of Music in Worship and Faith Formation	C3.9	MS131	Pastoral Care 1: Ministry in Daily Life
C1.10	IS/NT282	Jesus on the Silver Screen	C3.10	MS132	Pastoral Care 2: End of Life Issues
C1.11	IS/MM303	Gospel, Poverty, and Injustice	C3.11	MS391	Ministry Skills Guided Study
C1.12	IS/MM252	Ethics for the Marketplace in Asia	C3.12	TH393	Ministry Research Project
C1.13	IS391	Integrative Studies Guided Study	C3.13	TH395	Research Thesis

<b>C2</b>	<b>MM</b>	<b>Marketplace Ministries</b>	<b>C4</b>	<b>ME</b>	<b>Missions Equipping</b>
C2.1	MM100	Discerning Your Life	C4.1	ME101	History & Theology of Missions
C2.2	MM101	Marketplace Discipleship and Ministry	C4.2	ME102	Dimensions of 21st Century Missions
C2.3	MM103/4	Christians in a Disruptive and Digital World	C4.3	ME211	Cross-Cultural Missions Practicum
C2.4	MM211	Marketplace Integration Capstone			
C2.5	MM241	Money, Possession, and Faith			
C2.6	MM/IS303	Gospel, Poverty, and Injustice			
C2.7	MM/IS252	Ethics for the Marketplace in Asia			
C2.8	MM391	Marketplace Ministries Guided Study			

# Course Descriptions

The following BGST course descriptions specify whether the course offered is a core or elective course, and whether it is taken only for practicum academic units. It also describes the frequency of the course offered; the semester it will be offered in, and any pre-requisites needed to register for the course.

## Entry-Level Courses

If you are new to BGST and wondering where to start, consider one of the following 'entry-level' core courses:

### Old Testament Studies

Old Testament Foundations 1 **OT101**  
Old Testament Foundations 2 **OT102**

### Biblical Hermeneutics

Biblical Hermeneutics and Interpretation **HE101**

### Historical Studies

History of Christianity 1 **CH101**  
History of Christianity 2 **CH102**

### Integrative Studies

Everyday Christianity 1 **IS100**

### Missions Equipping

History & Theology of Missions **ME101**  
Dimensions of 21<sup>st</sup> Century Missions **ME102**  
Cross-Cultural Missions Practicum **ME211**

### New Testament Studies

New Testament Foundations 1 **NT101**  
New Testament Foundations 2 **NT102**

### Theological Studies

Christian Theology for Everyday Life **TS101**

### Christianity Spirituality

Christian Spirituality 1 **CS101**  
Christian Spirituality 2 **CS102**

### Marketplace Ministry

Discerning Your Life **MM100**  
Marketplace Discipleship and Ministry **MM101**

## A. Scripture

### **A1. OT – Old Testament Studies**

---

The Old Testament (OT) merits study both in its own right, and as essential background for understanding the New Testament. All our OT courses aim to give students a better understanding of the OT and the world in which it originated. We offer both general surveys of the entire OT and detailed studies of specific books and topics. In addition, we want our students to see Old and New Testaments as forming an organic whole in which God's plan of salvation is set out in its entirety. In other words, we take the OT seriously as part of Christian Scripture. Finally, we believe that the OT addresses issues of vital concern for Christians today, and hope that through our courses students will be better able to apply the OT to their own lives and circumstances.

#### **A1.1 OT101 – Old Testament Foundations 1**

*[Core] 3 AU. Offered Every Year, in S1.*

This course surveys the contents of the OT and seeks to do justice to two aspects of the OT: (1) the specific historical, geographical and cultural contexts in which the OT originated; (2) the fact that the OT is now part of Christian scripture. The aim of the course is to introduce students to the OT and its world, and to some of the resources available for understanding the OT, and to help students to see how the OT and NT fit together to form one coherent account of God's dealings with humankind. The Pentateuch and all the Historical Books are covered in this course.

#### **A1.2 OT102 – Old Testament Foundations 2**

*[Core] 3 AU. Offered Every Year, in S2.*

This is a continuation of OT101. Students may begin with OT102 and finish with OT101. OT102 covers biblical poetry, wisdom literature, and most books in prophetic literature. Students will learn about some key critical, historical, hermeneutical, and theological issues arising from these books. Application highlights will include, though not limited to, praying with the Psalms and wisdom texts, social justice in prophetic literature and its implications, and lament as a response to pain and suffering in the world.

#### **A1.3 OT391 – Old Testament Guided Study**

*[Elective] 1.5 AU. Offered All Year Round.*

This guided study is for students who wish to explore a specific area of study within the field of OT. Upon approval of a topic, the student will engage in independent research under the supervision of a faculty member. For students planning to write a Research Thesis, it is compulsory to take a guided study on the thesis topic first.

## **A2. NT – New Testament Studies**

---

The documents which make up the New Testament (NT) are foundational to the Christian faith, for they testify to God's Final Word, His Son. They are also some of the most influential documents ever written. As with our OT courses, our NT courses aim to give students a better understanding of the NT and the world in which it originated. We offer both foundational studies of the whole of the NT and detailed studies of specific books and topics. Since we believe that the NT addresses issues of vital concern for Christians today, we hope that through our courses students will be better able to apply the NT to their own lives and circumstances.

### **A2.1 NT101 – New Testament Foundations 1**

*[Core] 3 AU. Offered Every Year, in S1.*

NT Foundations 1 and 2 survey the entire contents of the NT in two semesters. Students will be drawn into the world of the NT and encouraged to interact with the themes and message contained within each piece of writing in the NT. In so doing, students can better examine the implications of the NT's message for Christians and for the Church today. NT101 is a general introduction to the four Gospels and Acts. Students can expect a survey of major interpretive approaches, as well as a consideration of historical and cultural issues. These include the synoptic problem and the literary relationship of the Gospels; the problem of the historical Jesus; the genre, historical setting, message and structure of each of the Gospels and Acts.

### **A2.2 NT102 – New Testament Foundations 2**

*[Core] 3 AU. Offered Every Year, in S2.*

This is a continuation of NT101. Students may begin with NT102 and finish with NT101. NT102 covers the Epistles (Pauline and Catholic) and Revelation. Students can expect to learn about: (1) the introductory issues pertaining to each document (author, date, occasion, genre, content, etc.) including factors in the first century, e.g. social, political, religious, that influenced the life and ministry of the first readers/hearers; (2) the theological message of each document; and (3) their relationships to, and differences from, each other.

### **A2.3 NT220 – The Reliability of the Gospels**

*[Elective] 1.5 AU. Offered All Year Round. SPL.*

At the very heart of the Christian faith is the person of Jesus of Nazareth. The documents from which we learn almost all we know about him are the four New Testament Gospels. But are they historically reliable? How can we know? Were they reliably transmitted and translated? Do other Gospels besides Matthew, Mark, Luke and John contain trustworthy information about Jesus? Why are Matthew, Mark and Luke so similar to each other and why is John so different from all three of them? Can we believe in the amazing miracles stories they contain, including a virgin birth and resurrection from the dead? These and related questions will be the focus of our investigation.

#### **A2.4 NT223 – Formation and Discipleship in Mark’s Gospel**

*[Elective] 1.5 AU.*

Mark’s Gospel – probably the earliest written account of the life of Jesus – is the shortest and sharpest of the gospels. Vivid and fast-paced as a story, it is also mysterious and challenging as a summons. Through an exegetical study of Mark, we will experience how the Gospel grabs readers by the collar and confronts them with the big question: “What does it mean to follow this Jesus?” We will then appropriate the answers for our own spiritual formation and discipleship.

#### **A2.5 NT231 – Between the Testaments: 400 Not-So-Silent Years**

*[Elective] 1.5 AU. Offered Every 2 Years.*

The 400 years between Malachi, the last book of the Old Testament to the birth of Christ is often thought to be a period of divine silence. Yet, this is the period of Second Temple Judaism, which is not only significant for the development of Judaism and Jewish identity but also a time when Jewish literature and the Hebrew canon took shape. This course will provide a broad overview of this historically rich era and how it informs our understanding and interpretation of the Old and New Testaments.

#### **A2.6 NT/IS282 – Jesus on the Silver Screen**

*[Elective] 3 AU. Offered Every 2 Years.*

Through our viewing of some Jesus films, as well as clips from other movies, we will explore the portrayals of Jesus in modern films. By comparing these portrayals to those found in the Gospels and their modern interpreters, we examine how modern biblical scholarship may (or may not) influence contemporary cinema. Furthermore, we will observe what these films tell us about their makers, their expectations of the audiences, and what roles these films play in shaping them.

#### **A2.7 NT364 – Reading Revelation Ethically**

*[Elective] 3 AU. Offered Every 2 Years.*

Christians have responded to Revelation in one of two ways: some admit they do not understand it, finding its many visions disturbing, and so avoid reading it altogether. While there are those who claim that they do understand it, treating it as an inexhaustible mine for the wildest ‘end-time’ speculations, and so become utterly fixated on the latest theories for every detail. In this course, we place Revelation in its first-century historical context, and thus open a window into the political, economic, social challenges that affect the early Christian communities living under Roman rule in what is now modern Turkey. We will read Revelation as ‘an apocalyptic prophecy in the form of a circular letter,’ an alternative vision of reality which transcends everyday space and time in order to motivate specific responses from these Christians. In this way, Revelation is a book of discipleship, calling for ethical responses be it in the area of empire, economics or ecology.

#### **A2.8 NT391 – New Testament Guided Study**

*[Elective] 1.5 AU. Offered All Year Round.*

This guided study is for students who wish to explore a specific area of study within the field of New Testament. Upon approval of a topic, the student will engage in independent research under the supervision of a faculty member. For students planning to write a Research Thesis it is compulsory to take a guided study on the thesis topic first.

### **A3. HE – Hermeneutics**

---

Bible study is easy: you simply open your Bible and let God speak to you. Yes? Experience shows that it is not quite as straightforward as that. The more you know about the world the Bible came from and the more you reflect on what actually takes place when you read and apply Scripture today, the more competent a reader of the Bible you will be.

#### **A3.1 HE101 – Biblical Hermeneutics and Interpretation**

*[Core] 3 AU. Offered Every Year, in S1/2*

‘Inspired’; ‘infallible’; ‘authoritative’; ‘the Word of God’—many Christians in Singapore would readily describe the Bible in these terms. However, the Bible must be interpreted and applied by men and women who are far from inspired and who are all too prone to error, even as they may claim the authority of Scripture for their words. The result can be the propagation of falsehood in God’s name, turning the Bible from a saving and healing revelation of God into something harmful, even destructive. It is not enough to hold a ‘high’ doctrine of Scripture; we must also interpret Scripture accurately. The primary focus of this course is the interpretation and application of Scripture. It aims to help you reflect deeply on what is involved in interpreting the biblical text. Throughout the course, we will explore essential aspects of biblical interpretation, such as word studies and the relevance of historical context.

### **A4. BH – Biblical Hebrew**

---

A working knowledge of Biblical Hebrew helps those who wish to engage in serious study of the Old Testament. The student needs to go beyond a knowledge of the elements of Biblical Hebrew to acquire some fluency in reading the Old Testament in Hebrew, along with an understanding of issues relating to Hebrew exegesis. This is the level to which we hope to bring students of our Hebrew courses.

#### **A4.1 BH111 – Biblical Hebrew 1**

*[Core] 3 AU. Offered Every 3 Years, in S1.*

The primary goal of this course, the first in a three-semester sequence, is to gain working knowledge of Classical Biblical Hebrew (CBH). The course will especially focus on matters of language—phonology, pronunciation, orthography, nominal and verbal morphology, grammar, syntax, lexicon, etc. Language acquisition will occur through exercises both in reading and composition, with students learning vocabulary pertaining to many areas of life, including family household, economy, politics, agriculture, religion, law, and many others. Students will begin to read excerpts from Genesis throughout the first semester.

#### **A4.2 BH112 – Biblical Hebrew 2**

*[Core] 3 AU. Offered Every 3 Years, in S2. Only for Credit. Pre-requisite: BH111.*

See BH111.

The primary goal of this course, the second in a three-semester sequence, is to gain working knowledge of Classical Biblical Hebrew (CBH). The course will especially focus on matters of language—phonology, pronunciation, orthography, nominal and verbal morphology, grammar, syntax, lexicon, etc. Language acquisition will occur through exercises both in reading and composition, with students learning vocabulary pertaining to many areas of life, including family household, economy, politics, agriculture, religion, law, and many others. Students will read excerpts from Genesis, Exodus and Jonah in the second semester. Students will learn how to exegete and interpret the biblical passages in the original language.

#### **A4.3 BH211 – Biblical Hebrew Reading/Intermediate Biblical Hebrew and Exegesis**

*[Core] 3 AU. Offered Every 3 Years, in S2. Pre-requisite: BH111, BH112.*

*For maximum benefit, students should have also completed HE101.*

The primary goal of this course is to gain intermediate level reading fluency in Biblical Hebrew prose and poetry. Selected OT passages are read to develop the students' mastery of biblical Hebrew. Emphasis is given to vocabulary, grammar, syntax, compositional methodology, rhetorical issues, and general poetics. Students will also make use of some of the basic tools for the reading and study of the Hebrew Bible, particularly BHS and BDB. Additionally, students will have some exposure to the prominent features of different stages of the Hebrew language.

## **A5. BG – Biblical Greek**

---

A working knowledge of New Testament (NT) Greek helps those who wish to engage in serious study of the NT. The student needs to go beyond a knowledge of the elements of NT Greek to acquire some fluency in reading the NT in Greek, along with an understanding of issues relating to exegesis of the NT Greek. This is the level to which we hope to bring students of our Greek courses. In BGST, students will be taught Modern (ethnic) Greek pronunciation rather than Erasmic pronunciation.

### **A5.1 BG111 – Biblical Greek 1**

*[Core] 3 Credits. Offered Every 3 Years, in S1. Only for Credit.*

BG111 and BG112 together cover the elements of NT Greek. At the end of these two courses, students will be expected to master the elements of the NT Greek (vocabulary and grammar) and be familiar with some basic reference tools important to the study of NT Greek. The course involves frequent practice in the reading and translation of texts taken from the NT Greek and the Septuagint. The reward is the thrill of being able to go directly to the biblical text and see its meaning and significance; and to develop a greater understanding of the decisions and conclusions made in commentaries and bible translations.

### **A5.2 BG112 – Biblical Greek 2**

*[Core] 3 Credits. Offered Every 3 Years, in S2. Only for Credit. Pre-requisite: BG111.*

See BG111.

### **A5.3 BG211 – Biblical Greek Reading/Intermediate Biblical Greek and Exegesis**

*[Core] 3 Credits. Offered Every 3 Years, in S1. Only for Credit. Pre-requisite BG112.*

*For maximum benefit, students should have also completed HE101.*

This course builds on the vocabulary and grammar (morphology and syntax) learned in BG111-112, AND the exegetical method introduced in HE101 (Biblical Hermeneutics and Interpretation). Using various NT texts as 'learning sites', students will develop their ability to read NT Greek, and gain further experience in the methods and tools involved in Greek exegesis, such as phrasing (outlining), textual criticism, grammatical analysis, word analysis, historical-cultural analysis, form and redaction criticism (for gospels).

## B. Tradition

### **B1. CH – Historical Studies**

---

The study of church history is no less than a study of God’s salvific work, as it is worked out through diverse social, cultural, geographical and political contexts over the last 2,000 years. The aim of historical studies is therefore two-fold: to arrive at a deeper appreciation of our diverse historical and theological heritage and to benefit from the spiritual insights and the lessons learnt by our spiritual forefathers, so that we may better prepare ourselves for the challenges that the new century will bring.

#### **B1.1 CH101 – Christian History, Thought and Culture 1**

*[Core] 3 AU. Offered Every Year, in S1.*

*CH101 is the first of a 2-course survey on the history and legacy of Christianity over the last 2,000 years. The course not only identifies the significant historical movements in the first 1,500 years of church history but also explores their theological, intellectual, cultural and spiritual relevance for contemporary Christians, especially those living in Asia. It begins with what John Calvin calls the ‘Golden Age of the Church’, that is, the age of the church fathers (2nd to 5th centuries). Thereafter, we explore the history and evolution of three major streams of Christianity: the Orthodox, Oriental and Western (Latin) Christianities, from the Middle Ages right up to the pre-Reformation period. Topics to be discussed include the formation of the biblical canon, the transforming impact of Christianity on Greek and Western culture, the spiritual legacy of monasticism, and the challenges of Christian discipleship and witness in societies as diverse as the Roman Empire, the Islamic Empire, Tang Dynasty China and Medieval Europe.*

#### **B1.2 CH102 – Christian History, Thought and Culture 2**

*[Core] 3 AU. Offered Every Year, in S2.*

This course continues the story first unfolded in CH101, by introducing students to the important theological, historical and spiritual movements between 1500–2001. Our journey begins in Europe with the advent of the Protestant Reformation, which will permanently change the face of religion in the Continent and, subsequently, the whole world. This is followed by an analysis of the developments that follow this Reformation: the rise of American and English Protestantism and spirituality, the growth of the evangelical movement, especially in America, and the Catholic Counter Reformation. Attention will also be given to the Enlightenment period, which would significantly influence and also challenge the claims of the Christian faith. Following these, we will turn our attention to the development of Christianity worldwide, with a focus on Christianity in China, in particular, and Asia in general.

### **B1.3 CH/CS260 – The Roots of Christianity**

*[Elective] 1.5 AU. Offered Occasionally.*

The Patristic period or the period of the Church Fathers (2nd to 5th centuries) is one of the most important eras of the Christian Church. Some of the key tenets of our Protestant faith, such as salvation by grace and the doctrine of the Trinity, find their doctrinal roots from this era. The aim of this course is to equip students with the historical, theological and spiritual background necessary for appreciating and benefitting from the teachings of the early church fathers. Besides covering a wide range of theological, historical and spiritual topics, students will spend a considerable time reading patristic texts, discussing and reflecting on the contemporary relevance and application of patristic teachings in the 21st century.

### **B1.4 CH391 – Church History Guided Study**

*[Elective] 1.5 AU. Offered All Year Round.*

This guided study is for students who wish to explore a specific area of study within the department of Church History. Upon approval of a topic, the student will engage in independent research under the supervision of a faculty member. For students planning to write a Research Thesis it is compulsory to take a guided study on the thesis topic first.

## **B2. TS – Theological Studies**

---

Theology is a discipline that seeks to make sense of who God is and of humanity's place within the purposes and works of God in the world. It takes seriously the Scriptures of the Old and New Testaments and the teachings of the Church as important sources of theological knowledge. It also seeks to understand the knowledge acquired from these sources in the context of societal and ecclesiastical issues which are pertinent to Christian faith and living.

### **B2.1 TS101 – Christian Theology for Everyday Life**

*[Core] 3 AU. Offered Every Year, in S1.*

As an introductory course on Christian theology, the content of our faith will be understood in the context of "the one, holy, catholic, (i.e. universal), and apostolic church" as confessed in the Nicene-Constantinopolitan Creed (A.D. 381). The lectures will follow the overall Trinitarian structure of the Creed, and where applicable, read in light of the Protestant-Reformation heritage. Weekly sessions will involve reading, reflection & response (as well as discussion during online class sessions) to topical readings, both primary and secondary.

### **B2.2 TS211 – Christian Theology 1**

*[Core] 3 AU. Offered Every 2 Years. Pre-requisite: TS101.*

"Nearly all the wisdom we possess," John Calvin insists, "consists of two parts: the knowledge of God and of ourselves." Nothing is more foundational in theology than a right understanding of God. But we can only know God in His revelation of Himself to us. And when we do this, we discover that He has revealed fundamental truth about ourselves. This course examines the great truths about God and Humankind that make up the prelude to the Gospel of Redemption in Jesus Christ.

### **B2.3 TS212 – Christian Theology 2**

*[Core] 3 AU. Offered Every 2 Years. Pre-requisite: TS101.*

This course continues the study of Christian doctrines begun in Christian Theology (TS211). It looks at the outworking of God's redemptive purposes through the Son and Spirit in the church and world. The doctrinal loci will cover: the persons and missions of Christ and His Spirit (Christology & Pneumatology), Salvation (Soteriology), the Church (Ecclesiology), and the Last Things (Eschatology). Tutorials and online readings will focus on engagement with and understanding of primary sources. At every point we will reflect on the personal and practical bearings of these truths on our lives and for the world today.

### **B2.4 TS/IS230 – Cultural Apologetics through Conversations**

*[Elective] 3 AU. Offered Every 2 Years.*

We are often unfamiliar with the questions that others wonder about the Christian faith. Most apologetics discussions also take place over conversations – at home, over meals, in church and at the workplace. TS/IS230 provides not only theological-spiritual perspectives and analytical frameworks for apologetic conversations, but also introduce skills for discerning, conversing, and listening to our friends. The topics covered range from classical concerns like the reliability of the Bible and historicity of the resurrection to the cultural concerns of our day, such as Christian misbehaviour, anti-intellectualism, and how to engage the LGBTQ+ community.

### **B2.5 TS/IS233 – The Seamless Life**

*[Elective] 1.5 AU.*

We all want to make sense of life, of who we are and why we are, of the relationship of our deepest beliefs about faith, hope, and love to the rest of life, personally and publicly. This course will challenge us to move beyond the fragmented sense of reality that seems in the air we breathe in the 21st-century, offering a more coherent vision of the whole of life, our labour and love, our work and worship; pushing against the dualisms that so easily entangle us, we will argue instead for a more seamless life in which all of life is holy because all of life matters to God. Through conversations and lectures, films and short stories, we will explore the coherence of the cosmos and of our place in it, by grace forming the eyes of our hearts to see more seamlessly the world that is really there.

### **B2.6 TS391 – Theological Studies Guided Study**

*[Elective] 1.5 AU. Offered All Year Round.*

This guided study is for students who wish to explore a specific area of study within the department of theological studies. Upon approval of a topic, the student will engage in independent research under the supervision of a faculty member. For students planning to write a Research Thesis it is compulsory to take a guided study on the thesis topic first.

### **B3. CS – Christian Spirituality**

---

Spiritual formation has always been understood by the early Christians as the practical outworking of Christian theology. As a 4th century monk puts it, 'Prayer is theology and theology is prayer'. In the last two centuries, however, the spiritual insights of our forefathers have often been downplayed by our modern and technocratic beliefs that the past is 'old-fashioned' while the future and the new is always better. The aim of Christian Spirituality courses, therefore, is to introduce students to the diverse traditions and practices of Christian Spirituality over the last 2,000 years, so that the lessons learnt here may complement our evangelical understanding of spiritual formation and help us avoid the spiritual pitfalls that the 21st century may yet bring to our lives.

#### **B3.1 CS101 – Christian Spirituality 1**

*[Core] 1.5 AU. Offered Every Semester, in S1 & S2.*

The organising framework for this course will be the Lord's Prayer in Matthew 6. This course will have four components: establishing the framework for Christian Spirituality in its biblical and historical development; relationship with God; relationship with self; relationship with others.

#### **B3.2 CS102 – Christian Spirituality 2: Practicum**

*[Core] 1.5 AU. [Practicum Credit] Offered All Year Round. Pre-requisite: CS101.*

Both Scriptures and Christian tradition have emphasised the close relationship between theological reflections and personal spirituality. Proper theological reflection should give rise to a greater love for God which, in turn, informs our knowledge of God. More than that, this transformative knowledge of God should also deepen our self-knowledge. Unfortunately, the transition from theological learning to self-knowledge and personal is not always straight forward. Some students don't do so and end up having a 'head full of knowledge but nothing much in the heart.' For this reason, CS102 is introduced as a Spiritual Formation Practicum (SFP) to help students renew and deepen their love for God, improve their own self-knowledge (of their strengths and weaknesses), and also help discern their role in Christ's mission for the world. To avoid student pre-occupation with academic performance, and to help them focus on deepening their relationship with God, this course will not be graded. Only a Pass will be awarded upon completion.

#### **B3.3 CS105 – Spiritual Disciplines for Self-Care**

*[Elective] 1.5 AU. [Practicum Credit] Offered Every Year.*

Am I able to hold my bundle of emotions (thoughts, feelings, visceral experiences and urges) so that I do not simply react to situations but respond in a way that reflect that I am a follower of Christ? Perhaps we struggle with this in stressful situations, with anger, sadness, anxiety and other emotional experiences in our day-to-day living. There is hope. We learnt from neuroscience that it is possible to regulate our emotions through new experiences. As part of our self-care, we can tap on Christian spiritual disciplines to create new emotional experiences that make space for God in our life. In this space we open ourselves to be more aware of God's presence, to notice and hold our

inner experiences with more openness, to discern with greater clarity what God is saying to us through his Word in our situation, and to allow the Holy Spirit to enable us to act in a way that brings greater love, praise and service to God. This course is experiential; it is for anyone who desires to experiment with embracing the Christian spiritual disciplines in their ordinary living towards greater emotional well-being. May we receive and experience God's grace in our emotional self-care.

#### **B3.4 CS/MS112 – Spiritual Care and Direction**

*[Core] 3 AU. [Practicum Credit] Offered Every 2 Years, in S2.*

What is spiritual care and direction? For the lecturer, it is a journey of longing and grace. For the spiritual carer, it is a journey of longing to know God deeper as one loves God and neighbour in the doing of spiritual care and direction; and to one's delight, experiencing God's abundant grace for both self and people in the process. For the people, it is a journey of longing for wholeness as a person and of encountering God's grace on the journey in and through the person of the spiritual carer. The focus of this module is essentially lay counselling. It is broad and practical-oriented. The spiritual carer will be introduced to a process-based counselling framework as well as embark on a journey of Spirit-controlled self-leadership of their inner world so as to provide care from the inside out. Attending and spiritual listening skills will be introduced and practiced.

#### **B3.5 CS211 – Christian Spiritual Classics for Today 1**

*[Core] 1.5 AU. Offered Every 2 Years.*

This is an introduction to the Christian spiritual classics and traditions over the last 2,000 years. Christian spirituality has always been grounded on the love of God the Father, as it is expressed through the sacrificial love of His Son and the Gift of His Holy Spirit. For every generation of Christians, their particular responses to this love of the Triune God have always taken place in the context of their social-cultural history and challenges. This, in turn, has given rise to a wide variety of Christian spiritual traditions, such as the Patristic, Benedictine, Cistercian, Orthodox, Coptic, Chinese Nestorian, Reformed and Evangelical movements, just to name a few. For contemporary Christians, there is great value in learning from these spiritual forefathers: this will not only allow us to see clearly the spiritual threats and opportunities that we now face, but will also provide us with spiritual resources, exemplary models and fresh perspectives necessary to address such contemporary challenges.

#### **B3.6 CS212 – Christian Spiritual Classics for Today 2**

*[Core] 1.5 AU. Offered Every 2 Years*

Since Pentecost, the Spirit of God has been at work in the Church, teaching Christians His Word, leading them in paths less travelled and enabling them to grow and mature in Christ. While partaking in the one and the same Spirit of Christ, Christians have often experienced the teachings and guidance of God in diverse ways. This course will familiarise students with the sociocultural, philosophical, theological, and spiritual context and teachings of every spiritual classic that the class

will read. As a continuation of CS211, we will work through the classic spiritual writings exploring various themes of Christian spirituality from the magisterial Reformers onwards. The objective of this course, then, is to survey the history of Christian spirituality across the second millennium of the church, looking in particular at the diverse writings and experience of Christian men and women of that era. Drawing on their spiritual insights, we trust that this ancient wisdom may still be used by God to guide us in our everyday spirituality.

### **B3.7 CS/CH260 – The Roots of Christianity**

*[Elective] 1.5 AU. Offered Occasionally.*

The Patristic period or the period of the Church Fathers (2nd to 5th centuries) is one of the most important eras of the Christian Church. Some of the key tenets of our Protestant faith, such as salvation by grace and the doctrine of the Trinity, find their doctrinal roots from this era. The aim of this course is to equip students with the historical, theological and spiritual background necessary for appreciating and benefitting from the teachings of the early church fathers. Besides covering a wide range of theological, historical and spiritual topics, students will spend a considerable time reading patristic texts, discussing and reflecting on the contemporary relevance and application of patristic teachings in the 21st century.

### **B3.8 CS391 – Christian Spirituality Guided Study**

*[Elective] 1.5 AU. Offered All Year Round*

This guided study is for students who wish to explore a specific area of study within the field of Christian Spirituality or Spiritual Theology. Upon approval of a topic, the student will engage in independent research under the supervision of a faculty member. For students planning to write a MATIS Thesis it is compulsory to take a guided study on the thesis topic first.

## **C. Integrative Studies**

### **C1. IS – Integrative Studies**

---

The aim of Integrative Studies is to apply Christian theology to engage the diverse contemporary issues faced by the Church and society. Broadly speaking, there are two approaches. The first is to bring Christian theology into dialogue with the topic or disciplines in concern, such as gender studies, arts, climate change, sustainability, digital technologies and marketplace industry concerns. Such concerns that address these issues are categorised as either Integrative Study (IS) courses or Marketplace Ministry (MM) courses. The second approach is to develop theologically informed Ministry Skills (MS) to prepare Christians to engage contemporary concerns. This includes courses covering preaching, Christian education, pastoral ministry, counselling and missions.

### **C1.1 IS100 – Everyday Christianity**

*[Core] 1.5 AU. Offered Every Year.*

Christ is not only Lord of our Sundays, but what we do in our everyday lives – from sports, food, and the arts, to the music, leisure, and Asian cultures that we enjoy. The course provides the theological perspectives for understanding the different aspects of our everyday lives, so that we can bring them under the Lordship of Christ!

### **C1.2 IS101 – Christianity, Culture and Society**

*[Core] 3 AU. Offered Every Year, in S2. Pre-requisite: HE101.*

In today's complex and complicated world, Christians need to bring together various disciplines and skills so as to be able to first, understand the challenges, and then secondly to respond with Christian grace and wisdom. With this deeper and fuller understanding then, comes the ability to live well, and to be His witnesses. To do this, an interdisciplinary approach is needed, which will include the following dimensions: (1) Contextual: to develop awareness and sensitivity to key issues that concern life in contemporary Singapore by identifying and analysing case studies taken from the local context. (2) Integrative: to integrate theological studies and vocational life by offering basic frameworks of thought. (3) Theological: to facilitate socio-cultural analysis that is guided by biblical and theological reflection.

### **C1.3 IS121 – The Church in Mission**

*[Core] 1.5 AU. Offered Every 2 Years, in S1.*

God acts in the world, in creation and redemption, and looking forward to a time of consummation. This mission of God, has a church, the people of God who are also called to be and to act out God's work in the world today. This mission, then, has to be holistic and seek to bring fullness and flourishing to all of people and communities, so as to bring the 'whole gospel to the whole world.' (This is formerly known as ME101)

### **C1.4 IS211 – Navigating Being Christian in Multi-Religious Asia**

*[Core] 3 AU. Offered Every 2 Years.*

How do Christians successfully negotiate and positively impact our multi-religious societies in Asia? In this course, participants will acquire the knowledge, abilities, and attitudes to engage the major religions practiced in Singapore and the region, such as Chinese folk religion, Buddhism, Islam, and Hinduism. They will also gain a deeper appreciation of how religions interact with one another, and affect local cultures and societies. Lastly, they will develop skills in communicating and building bridges in interfaith contexts.

### **C1.5 IS212 – Philosophies Shaping #21CAsia**

*[Core] 3 AU. Offered once every 2 Years*

Asia is the birthplace of world religions and Eastern philosophies. It is also the location of several cosmopolitan cities, thus making it a melting pot of Western and Eastern ideas. As Christians living in 21st century Asia, how do we engage these diverse interests and concerns? In this course, we shall survey the key Asia and Western philosophies shaping the interests and concerns of this region. We begin with key Asian thought like Daoism, Confucianism and Islam, before considering the influence of the Western intellectual heritage, from Platonism to Postmodernity, focusing always on how we can contextualise and proclaim Christ's Gospel to our Asian neighbours.

### **C1.6 IS219 – Intergenerational Ministry in the Singapore Church**

*[Elective] 1.5 AU. Offered Every Year, in S2.*

We live at a unique point in history where at least five generations are living and working together. Each generation has been shaped by different formative experiences: for the Silent Generation—World War 2 and the Great Depression; for Generation X and onwards—the advent of the internet. Because of this, the ways we view life and faith are different. While it is wrong to overgeneralise the characteristics of each generation, and indeed each individual is in many ways unique, there are also common trends we see in the different generations. This has resulted in misunderstanding and conflict in our families, our organisations, and in the church as well, between those from different generations. One of the fallouts from this conflict is that young adults (millennials) are leaving our churches. This is a challenge the church has not faced before. Guided by the scriptures, we believe that the church of Christ is meant to be a body where her members are united, diverse, and interdependent. Therefore, it is critical that we work at understanding the different generations in churches today; to help the different generations understand themselves and each other, to minimise conflict between the generations, and to help each generation contribute their unique strengths so that the church can be healthy and whole for God’s purposes.

### **C1.7 IS/TS230 – Cultural Apologetics through Conversations**

*[Elective] 3 AU. Offered Every 2 Years.*

We are often unfamiliar with the questions that others wonder about the Christian faith. Most apologetics discussions also take place over conversations – at home, over meals, in church and at the workplace. TS/IS230 provides not only theological–spiritual perspectives and analytical frameworks for apologetic conversations, but also introduce skills for discerning, conversing, and listening to our friends. The topics covered range from classical concerns like the reliability of the Bible and historicity of the resurrection to the cultural concerns of our day, such as Christian misbehaviour, anti-intellectualism, and how to engage the LGBTQ+ community.

### **C1.8. IS231 – Postmodernism, Feminism, and Social Justice: Why Should the Church Care?**

*[Elective] 1.5 AU.*

Throughout scripture, believers are called to discern the times which involves understanding global movements and how they have shaped worldviews within and beyond the church. From the late 20th century, 3 movements have fundamentally shaped contemporary culture – postmodernism, feminism, social justice. In this course, we examine the historical emergence of these movements and influential concepts such as post-truth, intersectionality, gender performativity alongside some of the key tensions that have emerged such as gender versus sexuality, equity versus equality, rights versus virtues–based approaches to justice, among others. In particular, we discuss how Christian scholars have critiqued as well as engaged with postmodern, feminist and social justice concepts. We consider how Christians can respond when these concepts conflict with Christian values and the opportunities these concepts may have in informing biblical interpretation, the role of women in the church, and the church’s role in effecting transformative changes in the world.

**C1.9 IS/TS233 – The Seamless Life**

*[Elective] 1.5 AU.*

We all want to make sense of life, of who we are and why we are, of the relationship of our deepest beliefs about faith, hope, and love to the rest of life, personally and publicly. This course will challenge us to move beyond the fragmented sense of reality that seems in the air we breathe in the 21st-century, offering a more coherent vision of the whole of life, our labour and love, our work and worship; pushing against the dualisms that so easily entangle us, we will argue instead for a more seamless life in which all of life is holy because all of life matters to God. Through conversations and lectures, films and short stories, we will explore the coherence of the cosmos and of our place in it, by grace forming the eyes of our hearts to see more seamlessly the world that is really there.

**C1.10 IS/MS236 – Theology of Music in Worship and Faith Formation**

*[Elective] 3 AU.*

This course examines the theology and practice of worship music from biblical times through to the contemporary period. Key moments in Christian church music are found in biblical times, the early Catholic church, the Reformation, congregational hymnody in England and the United States, contemporary Christian music and global music across cultures. Emphasis is given to the role and function of music for teaching, spiritual edification, spiritual formation, beauty and authentic expressions of worship to God.

**C1.11 IS245 – Asian Theology**

*[Elective] 1.5 AU.*

Christianity has been in Asia for at least 2000 years, and Asians have been theologising – reflecting theologically – through the issues of the context. That task continues as Christians today also consider critically the issues such as ancestor veneration, materialism, inequalities, among others and present the church's views on them. Secondly, we should communicate the truths of the gospel sin, salvation, and redemption in ways which resonate within Asian contexts. This course will critically explore some theologies as expressed by Asian Christians and determine their value and place in the Asian contexts today. Students will also learn to develop frameworks that will guide them in the task of understanding the Asian contexts so as to begin theologising in ways that are suitable, relevant and meaningful. Students should then be able to lead others into developing theologies which will be biblically grounded, historically connected and contextually relevant.

**C1.12 IS/NT282 – Jesus on the Silver Screen**

*[Elective] 3 AU. Offered Every 2 Years.*

Portrayal of Jesus and Christ Figures on Film. Through our viewing of some Jesus films, as well as portrayals of Jesus in modern films. By comparing these portrayals to those found in the Gospels and their modern interpreters, we examine how modern biblical scholarship may (or may not) influence contemporary cinema. Furthermore, we will observe what these films tell us about their makers, their expectations of the audiences, and what roles these films play in shaping them.

### **C1.13 IS/MM303 – Gospel, Poverty, and Injustice**

*[Elective] 1.5/ 3 AU.*

The Bible reveals that God is deeply concerned for the welfare of the vulnerable groups in society, and Christians are called to follow as Christ did: to proclaim good news to the poor, freedom for the prisoners, sight for the blind, to set the oppressed free, to proclaim the year of the Lord's favour (Luke 4:18). However, believers, especially the middle-class church, remain unable to perceive the poor, especially, those that are hidden from plain sight. This course aims to sensitise students to problems that affect those in the margins of the society, and to familiarise the students to Biblical and theological motifs that pertain to the poor. Students will not only have to see the poor in their hiddenness but see them in light of God's Word. This course is specifically developed to be relevant to heartlanders who want to understand and begin to work against poverty and injustice in their own setting, as well as in the contexts of their neighbouring majority world countries.

### **C1.14 IS/MM252 – Ethics for the Marketplace in Asia**

*[Elective] 3 AU. Offered Every 2 Years, in S2.*

The 21st century is marked by growing disruptions and uncertainties both globally and locally. This poses significant challenges for marketplace Christians seeking to apply their faith to their work, and to understand how to engage emerging cultural and social trends ethically. In this course, we shall explore the theological and ethical frameworks needed for Christians to discern their moral choices in their workplace and communities. Issues to be discussed include the ethics of marketing and advertising, supply chains, conducting business in Asia (e.g. bribery), Environment, Social and Governance (ESG), and Diversity, Equity and Inclusion (DEI).

### **C1.15 IS391 – Integrative Studies Guided Study**

*[Elective] 1.5 AU. Offered All Year Round.*

This guided study is for students who wish to explore a specific area of study within the field of Integrative Studies. Upon approval of a topic, the student will engage in independent research under the supervision of a faculty member. For students planning to write a Research Thesis it is compulsory to take a guided study on the thesis topic first.

## **C2. MM – Marketplace Ministries**

---

### **C2.1 MM100 – Discerning Your Life**

*[Core] 1.5 AU. Offered Every Year, in S2.*

Christians are saved not just for eternal life (John 3:16). We are called to be effective ambassadors of Christ (2Cor 5:20) who can participate in God's creative and redemptive purposes in our workplaces, churches, and societies. Our roles in this mission are bound up with how Christ has shaped our lives, training, experiences and even transitions. It is also informed by the talents he has called us to steward. This takes much discernment of the Spirit's guidance. MM100 facilitates this process by providing biblical insights to how our work and lives matter for God's mission of transforming the world. It will also provide analytical frameworks, tools, and spiritual mentoring to aid our discernment of how we can how we fulfil our ambassadorial role.

## **C2.2 MM101 – Marketplace Discipleship and Ministry**

*[Core] 1.5 AU. Offered Every Year, in S1.*

The apostle Paul speaks of Christians as Christ's ambassadors in the world (2 Cor 5:20). What does this mean for marketplace Christians who spend nearly 90,000 hours of their lives at work? MM101 aims to equip Christians to become more effective ambassadors by considering God's purposes for their contemporary work, and the role of self-leadership and identity formation in their marketplace discipleship. It also introduces spiritual disciplines to hone their self-discipleship before considering how Christians can minister well wherever God has called them.

## **C2.3 MM103/4 – Christians in a Disruptive and Digital World**

*[Core] 1.5/3 AU. Offered Every 2 Years.*

Disruptions have been a key concern for business leaders in the last two decades, as noted in Clayton Christensen's *Innovator's Dilemma* (1997). Since then, we have seen not only traditional businesses disrupted but also the pace of disruption accelerating due to the advent of the Fourth Industrial Revolution (4IR). As the recent COVID19 pandemic has shown, the Church is also not immune to disruptions. Christian leaders now find themselves grappling with how to disciple Christians in a rapidly changing world, up against challenges as wide ranging as the stress of remote work, economic recessions, shifts in geopolitics and economic structures, and the unfamiliarity of ministering in a digital world. The aim of this course is to survey the above challenges and to introduce the theological, spiritual, and interdisciplinary resources that can enable the Church to disciple Christians and to further God's kingdom in this new norm. Students will also have opportunities to dialogue with industry experts and practitioners on the challenges of digital disruptions and consolidate their learning through a group project.

## **C2.4 MM211 – Marketplace Integration Capstone**

*[Core] 1.5 AU. Offered as a Guided Study.*

To become effective ambassadors for Christ in our marketplaces, Christians must not only lead themselves and others well at work, but must also understand the practices, challenges, and policies in their industries, whether government, banking, technology, or the arts. This course provides the theological perspectives, frameworks, and analytical tools for discerning these issues and the opportunity for Christians to work out their responses with the help of experienced industry mentors.

## **C2.5 MM241 – Money, Possession, and Faith**

*[Elective] 1.5 AU.*

Nothing is more pervasive and insidious than money. It preoccupies our home, work and even church. A survey by the American Psychological Association found money to be the greatest concern among Americans; ahead of the three other key concerns of family, work and health. The rich and the poor are stressed by money for different reasons. In Singapore money has been blamed as the chief culprit in breaking up marriages. Few can claim that money is of no concern to them. This course will explore the historical role of money from a biblical perspective and consider how Christians should steward our money and possessions for Christ.

### **C2.6 MM/IS303 – Gospel, Poverty, and Injustice**

*[Elective] 1.5/3 AU.*

The Bible reveals that God is deeply concerned for the welfare of the vulnerable groups in society, and Christians are called to follow as Christ did: to proclaim good news to the poor, freedom for the prisoners, sight for the blind, to set the oppressed free, to proclaim the year of the Lord's favour (Luke 4:18). However, believers, especially the middle-class church, remain unable to perceive the poor, especially, those that are hidden from plain sight. This course aims to sensitise students to problems that affect those in the margins of the society, and to familiarise the students to biblical and theological motifs that pertain to the poor. Students will not only have to see the poor in their hiddenness but see them in light of God's Word. This course is specifically developed to be relevant to heartlanders who want to understand and begin to work against poverty and injustice in their own setting, as well as in the contexts of their neighbouring majority world countries.

### **C2.7 MM/ IS252 – Ethics for the Marketplace in Asia**

*[Core] 3 AU. Offered Every 2 Years, in S2.*

The 21st century is marked by growing disruptions and uncertainties both globally and locally. This poses significant challenges for marketplace Christians seeking to apply their faith to their work, and to understand how to engage emerging cultural and social trends ethically. In this course, we shall explore the theological and ethical frameworks needed for Christians to discern their moral choices in their workplace and communities. Issues to be discussed include the ethics of marketing and advertising, supply chains, conducting business in Asia (e.g. bribery), Environment, Social and Governance (ESG), and Diversity, Equity and Inclusion (DEI).

### **C2.8 MM391 – Marketplace Ministries Guided Study**

*[Elective] 1.5 AU. Offered All Year Round.*

This guided study is for students who wish to explore a specific area of study in Marketplace Ministries. Upon approval of a topic, the student will engage in independent research under the supervision of a faculty member. For students planning to write a Research Thesis it is compulsory to take a guided study on the thesis topic first.

## **C3. MS – Ministry Skills**

---

### **C3.1 MS101 – Foundations for Christian Ministry**

*[Core] 1.5 AU. Offered Every 2 Years.*

This course seeks to provide students (both lay-leaders and those preparing for ministry) with a theological foundation and practical understanding of pastoral ministry. It integrates three dimensions of learning, namely (1) personal reflection, (2) ministry insights and (3) research-based learning. Some of the topics covered are the call to ministry, meaning of ordination, women in pastoral office, shepherding, the pastor of the worshipping community, ministry of sacraments, pastoral visitation, and etc.

### **C3.2 MS111 – Basic Counselling Skills**

*[Core] 3 AU. [Practicum Credit] Offered Every 2 Years.*

Although the Church emphasises the importance of discipleship, she is often weak in fostering friendship and genuine connections. This course will equip students to develop a comprehensive framework of help through the theological lenses of God's grace and sanctification. It also introduces practical skills for listening, helping, and caring for others by connecting deeper with them, and gaining a greater awareness of what triggers them and why.

### **C3.3 MS/CS112 – Spiritual Care and Direction**

*[Core] 3 AU. [Practicum Credit] Offered Every 2 Years, in S2.*

What is spiritual care and direction? For the lecturer, it is a journey of longing and grace. For the spiritual carer, it is a journey of longing to know God deeper as one loves God and neighbour in the doing of spiritual care and direction; and to one's delight, experiencing God's abundant grace for both self and people in the process. For the people, it is a journey of longing for wholeness as a person and of encountering God's grace on the journey in and through the person of the spiritual carer. The focus of this module is essentially lay counselling. It is broad and practical-oriented. The spiritual carer will be introduced to a process-based counselling framework as well as embark on a journey of Spirit-controlled self-leadership of their inner world so as to provide care from the inside out. Attending and spiritual listening skills will be introduced and practiced.

### **C3.4 MS121– Teaching and Learning for Discipleship**

*[Core] 1.5 AU.*

Discipleship is a core tenet of the Great Commission. Amid a complex secular world, discipleship does not happen by chance; the saints need to be properly equipped for the work of ministry (Eph 4:12). Equipping involves embracing the God-given capacity of His human images to learn, experience, and grow in maturity over the course of their whole lives. Through this course, we will develop an understanding of how we learn and grow, examine teaching pedagogies and modalities, and explore the intersection of these in the context of Christian discipleship. This course also includes a spiritual formation element – understanding ourselves better as teachers and learners.

### **C3.5 MS141 – Liturgy & Worship**

*[Core] 1.5 AU. Offered Every 2 Years*

This course explores the place of liturgy in Christian worship and living. The approach is integrative, i.e., scriptural, theological, historical and contemporary resources will be used to consider the subjects of liturgy worship, liturgical time, sacramental theology and the ordinances/sacraments of baptism and communion. Students will be encouraged to make informed and critical reflections of liturgical practices in their own traditions in the light of liturgical practices in other traditions.

### **C3.6 MS221 – Proclaiming God's Word**

*[Core] 1.5/3 AU. Offered Every 2 Years.*

Sermon Preparation and Delivery. This is an introductory course on preaching, which focuses primarily on the theology of preaching and the art of sermon preparation and delivery. While there are many valid forms of preaching, this course will focus mainly on expository preaching.

### **C3.7. MS/IS236 – Theology of Music in Worship and Faith Formation**

*[Elective] 3 AU.*

This course examines the theology and practice of worship music from biblical times through to the contemporary period. Key moments in Christian church music are found in biblical times, the early Catholic church, the Reformation, congregational hymnody in England and the United States, contemporary Christian music and global music across cultures. Emphasis is given to the role and function of music for teaching, spiritual edification, spiritual formation, beauty and authentic expressions of worship to God.

### **C3.8 MS331 – Field Education**

*[Core] 1.5 AU. [Practicum Credit] Offered Every Year, S1.*

Field education is a 6 months compulsory program (1.5 academic units per year, totalling 3 academic units) where MDiv students undertake supervised ministry in a host organisation (a church or parachurch). Each year, students will be assigned to a specific ministry within the host organisation so that they can acquire practical training and experience in pastoral ministry.

### **C3.9 MS391 – Ministry Skills Guided Study**

*[Elective] 1.5 AU. Offered All Year Round.*

This guided study is for students who wish to explore a specific area of study within the department of Applied Theology. Upon approval of a topic, the student will engage in independent research under the supervision of a faculty member. For students planning to write a Research Thesis it is compulsory to take a guided study on the thesis topic first.

### **C3.10 TH393 – Ministry Research Project**

*[Elective] 4.5 AU. Offered All Year Round*

Students who wish to conduct detailed field study on a topic of interest in Integrative Studies and Marketplace Ministry may do so via a Ministry Research Project. A project is typically 15,000–20,000 words in length.

### **C3.11 TH395 – Research Thesis**

*[Elective] 4.5 AU. Offered All Year Round*

Students who wish to conduct detailed research on a topic of interest in Biblical Studies, Theology, History, Christian Spirituality, Integrative Studies and Marketplace Ministry may do so via a thesis. A thesis is typically 15,000–20,000 words in length.

#### **Note:**

*BGST occasionally offers new elective courses as part of our semestral offerings. Some courses listed in the catalogue are offered once every 2–3 years. Please consult the Course Schedule each semester for available courses in your period of interest.*

# Academic Year

BGST's Academic Year runs from July to June each year in two semesters. Semester 1 runs from July – December, while Semester 2 runs from January – June.

## Calendar of Key Events

### AY 2025-26, SEM 1 (JUL - DEC)

OCTOBER Annual Luncheon

### AY 2025-26, SEM 2 (JAN - JUN)

MARCH 31 Deadline for applying to graduate in May

APRIL 30 Deadline to submit all assignments (for graduating students)

MAY 23 Convocation

# Onboarding



To welcome and onboard our new students, we have a BGST welcome pack in the form of a micro-learning course that is accessible online to help students orientate to BGST life as a student.



Welcome to BGST

[courses.bgst.edu.sg/courses/welcome-to-bgst](https://courses.bgst.edu.sg/courses/welcome-to-bgst)

Students can also have the option to journey along together with an Alumni during their time with BGST as a theological student through the Alumni Mentorship Programme. Please write in to inform of your interest.



Email

[contact@bgst.edu.sg](mailto:contact@bgst.edu.sg)

# Educational Resources

BGST's Education Resources comprise two digital libraries and a print library.



## Digital Libraries

The **Digital Theological Library** (DTL) allows access to over 1.5 million digital books, 100 million articles.

The **Overdrive Digital Resource** (ODR) allows access to around 1000 e-books and audiobooks.



## Print Library

The print library is a physical library (11,000 books) located at BGST. Please see Library Opening Hours on our website to plan your visit.



## Courses

All courses are supported by the **Thinkific Learning Management System** (LMS). To learn how to use the LMS, please visit our online onboarding course.



Welcome to BGST

[courses.bgst.edu.sg/courses/welcome-to-bgst](https://courses.bgst.edu.sg/courses/welcome-to-bgst)

# Study Commitment

Most students start with 1-2 courses in one semester. On average, students need to devote 7.5 hours each week for a 3-academic unit class. Over a semester, the time commitment for a 3-academic unit class is:

**30 hrs**

Lectures

**90 hrs**

Required Readings,  
Assignments, Tutorials,  
Exams (if any)

**120 hrs**

**Total**

# Maximum Period for Programme Completion

BGST programmes can be taken either full-time or part-time over an extended number of years. The maximum period of completion of programmes, depending on the nature of commitment, are:

Programme	Maximum Period	Academic Units
<b>Grad Cert</b>	2 years	15
<b>Grad Dip</b>	4 years	30
<b>MATIS</b>	6 years	60
<b>MDiv</b>	8 years	90

# Leave of Absence

BGST understands that life has its unexpected twists and turns. If you are unable to continue regular studies and require a leave of absence due to:

1. Work re-location or significant workload issue;
2. Unforeseen family commitments; or
3. Health issues, e.g. surgery, illnesses

Please write in to BGST for a Leave of Absence from your study. This will be given for up to a period of 6 months, renewable. This would be subject to case-by-case review and approval.

# Financing Your Education

To keep the cost of our students' education affordable, 80% of our ministry is funded through donations as a charity. During the course of their studies, students will pay fees including annual student fees, course fees and miscellaneous fees, such as graduation fees.

Foreign students residing in Singapore are to finance their own accommodation costs and living expenses. Unfortunately, BGST is currently unable to sponsor student visas.

# Tuition, Fees & Expenses

To participate in BGST's learning community, all students must pay an annual Student Membership subscription at the start of each Academic Year in July. Programme students and those taking courses on credit are also required to pay an annual Library Membership fee.

Please visit our website for the full list of applicable fees in addition to the Course Fees and Programme Fees.



Fees Page

[courses.bgst.edu.sg/pages/fees](https://courses.bgst.edu.sg/pages/fees)

**COURSE FEES**

<b>Taken for</b>	<b>Audit</b>	<b>Credit</b>	<b>CS102/MM100</b>
<b>1.5 Academic Units</b>	\$150	\$325	\$650
<b>3 Academic Units</b>	\$300	\$650	

These course fees are effective from AY2025 onwards.

Some 1.5 academic units, such as CS102 and MM100 employ psychometric profiling tools, and one-to-one spiritual mentoring. Due to their higher costs, they are priced like 3 academic units.

**PROGRAMME FEES**

<b>Programme</b>	<b>Fees</b>
<b>GCCS</b>	\$3,900
<b>GCCM</b>	\$3,900
<b>GCMS</b>	\$3,900
<b>GDCS</b>	\$7,150
<b>GDMS</b>	\$7,150
<b>GDMS</b>	\$7,150
<b>MATIS</b>	\$13,650
<b>MDiv</b>	\$20,150

# Ministry Formation Skills

## Other Courses and Modules

Through our Centres for Spiritual Formation and Christian Leadership, BGST often collaborates with industry practitioners and executive trainers to develop Ministry Skills Formation Courses and Modules. Such training incorporates psychometric profiling, one-to-one coaching or spiritual mentoring and other practicums. For these reasons, module fees will vary according to the nature of each module.

# Spouse Tuition Benefit Policy

If a student is enrolled in at least 4.5 AU of credit courses in a semester, their spouse is eligible for a 50% discount on any one audit or one credit course that same semester (except CS102, CS103 or MM100).

To receive your discount code, please write to us at [contact@bgst.edu.sg](mailto:contact@bgst.edu.sg).

Please note: This discount applies to course fees only. The spouse must complete the standard registration process and pay all other applicable fees.



Payment of Fees

Payment of all applicable fees can be made through here:



Fees Page

[courses.bgst.edu.sg/pages/fees](https://courses.bgst.edu.sg/pages/fees)



# BGST Community & BGST Collective

BGST Community comprises alumni, students and BGST friends who seek to develop and facilitate the community life within BGST. It is the first port-of-call where new students can find mentoring support for their learning. As a platform, BGST Community also organises regular events to provide opportunities for students and alumni to meet. It hopes that mentoring relationships and collaborations can be forged in this process. BGST Community is led by the BGST Collective.

We invite all students to join the **BGST Community**. Write to us to be included as part of the team!



Email

[contact@bgst.edu.sg](mailto:contact@bgst.edu.sg)

# Categories of Students

BGST students are classified as follows:



## Programme Students

These are students who wish to take up studies leading to a BGST's Graduate Certificate, Diploma or Master. Students may enrol on a full-time or part-time basis.



## Non-Programme Students

These are students who wish to take courses in areas of interests to them, without enrolling into the Graduate Certificate, Diploma or Master programmes. If a student wishes to become a programme student later, he/she may do so by going through a Programme Admissions Application.

# Signing up for BGST Programmes & Courses

You can sign up for a BGST programme or course anytime. For course registrations, please take note of the deadlines for specific course registrations.

If you feel unprepared to commit to a full BGST programme, you may enroll in individual courses as a Non-Programme Student. During registration, you will have the option to pursue the course either for audit (1.5 AU) or for credit (3 AU). For further details on these pathways, please refer to the Audit Course & Credit Course information on pg. 73.

While many students begin their BGST learning by registering for a course, you are encouraged to start by enrolling in our shortest programme: the Graduate Certificate. Signing up for a programme often helps your learning process. This is because the programme duration provides a structure and a timeline for you to complete your learning milestones.

## Programme Admission Requirements

### Postgraduate Programmes

The minimum requirement for entry to any BGST postgraduate programme is a Bachelor's Degree from a recognised institution or the equivalent with a minimum GPA of 2.5 out of a possible 4.0. The personal and spiritual aspects of the applicant will also be considered. Decisions made will be based upon the whole application.

Those who do not possess a first degree may sign up for any Graduate Certificate or academic units as 'Non-Programme Students'. Non-Programme Students can later transfer their academic units to the Graduate Certificate. To graduate from the Graduate Certificate, they must obtain an average grade of B- for their BGST courses. Upon graduation, they may be eligible to apply for any higher BGST programmes. For admission details, please refer to the Admissions Application Form: <https://bgst-ims.com/Online/Default.aspx>

# Transfer of Academic Units & Exemptions

Students who have completed theological training of a level comparable to that of BGST may be able to transfer academic units of their coursework obtained from their previous institutions. Alternatively, they may be granted exemptions from BGST required courses on the basis of such previously completed course-work. All transfers or exemptions must be specially applied for. *There are no automatic transfers or exemptions.* Applications should be made in writing to [contact@bgst.edu.sg](mailto:contact@bgst.edu.sg), and must be accompanied by the relevant transcripts and other documentation. Students may transfer up to **50%** of the academic units required by their programme, subjected to the discretion and approval of BGST.

## Programme Acceptance

As soon as ALL application papers are received, the application will be processed and potential students will be notified of their admission status. A student whose application is incomplete may enrol in a first course but should make every effort to complete the application process as soon as possible. If the student is not admitted into a programme, the student will be considered a Non-Programme Student. Applicants accepted into BGST Programme study can register for courses whenever they are available.

Before registering for courses, students may consult their faculty advisors concerning programme requirements and course offerings. However, the responsibility remains solely upon the student to ensure all programme requirements are fulfilled.

## Course Schedule

The Course Schedule for each semester is publicised in May (for Semester 1 courses) and November (for Semester 2 courses) on the BGST Programmes and Courses site <https://courses.bgst.edu.sg/pages/courses>

## Course Registration

Please visit our courses site to learn which courses are offered for Live or Self-Paced Learning.



Registration

[courses.bgst.edu.sg/pages/fees](https://courses.bgst.edu.sg/pages/fees)

# Learning Modes: Live | SPL

BGST adapts to the "Open University" principle to theological education with the learning modes described below. Please refer to Course Registration for more details.

## Live Class (Live)

These are lectures and tutorials conducted live in person or live via an online format, e.g. Zoom. For 'Live' courses, registration should be done at least two weeks before the course begins.

## Self-Paced Learning (SPL)

This is primarily self-directed learning. Lectures may be in audio or visual format. Each student will have a tutor assigned for each SPL course. Students may register for SPL at any time and are allowed to set their own time frame and pace of study. Students are to note that all audio-visual materials of the course must be viewed and listened to, and all assignments completed within 6 months from the registration of the course. Students may take up to 50% of the total academic units required by their programme in the form of SPL.

## Learning Mode Conversion

Students may convert from Live course to SPL or vice versa by submitting a Learning Mode Course Change Form, giving reason(s) for the change.

# Audit Course | Credit Course

## Audit Course

Audit students do not have to fulfil the assignment requirements. However, they are encouraged to do class exercises and assignments to get the maximum benefit from the courses. They will not receive grades that are transferable to BGST Postgraduate Programmes. Audit students may top up the difference to upgrade their course to Credit.

## Credit Course

Credit students are required to satisfactorily complete all the course assignments by the stated deadline. They will receive grades that are transferable to BGST postgraduate programmes. Incomplete assignment submission by the deadline will result in the course being downgraded to Audit without refund.

## Audit-Credit Course Conversion

When you take a course for audit, you may upgrade your course from Audit to Credit anytime throughout the course upon payment of the fee difference. You may also change from Credit to Audit due to work commitment or other constraints. This, however, must be done by the end of the first session, beyond which there will be no refund for the fee difference.

For credit students, there are two deadlines for submission of assignments. Should you miss both deadlines, your course will be automatically downgraded from credit to audit with no impact on your GPA. You may be able to reinstate your course to Credit by paying a \$180 reinstatement fee. The maximum grade awarded for any reinstated course is B+.

# Course Types

BGST course curriculum is organised around the following course types.

---

Core Courses	For programme study, a number of core courses are required to be taken. These courses are usually foundational in nature and aim to introduce a particular area of study. The number of core courses increases as one moves from the diploma to master programmes. Core courses are usually 3 academic units.
--------------	---

---

Elective Courses	For each programme, a certain number of academic units is allocated to elective courses. Students have complete freedom as to which courses they will take as electives. Depending on programme, allocated number of elective academic units are required to be attained. Elective courses are usually 1.5 academic units.
------------------	--

---

Guided Studies	Students are given the opportunity to pursue areas of personal interests, provided a faculty member is available to supervise the studies. These guided courses are 1.5 academic units each.
----------------	--

---

Thesis Project	Students who intend to work on a Research Thesis or Ministry Research Project must first complete the Guided Study (1.5 academic units) in the topic relevant to the thesis or project. These are 4.5 academic units in total.
----------------	--

---

Practical Training	These courses (e.g., Field Education) may stretch over periods longer than one semester. Special regulations apply for these. Details will be provided for such courses.
--------------------	--

# Assignment Guidelines

Assignments can be in the form of Essays, Book Reviews, Project Presentations, Prayer Practicums, etc. Guidelines for assignment submissions include guidelines for

1. Assignment Format
2. Bibliographical Format, and
3. How to Write Them

Information about Style Guide, Paper Submission Formats and Research Thesis and Ministry Research Projects details will all be provided in the onboarding micro-learning course. Please refer to the – *Welcome to BGST* – onboarding course for details.



Welcome to BGST

[courses.bgst.edu.sg/courses/welcome-to-bgst](https://courses.bgst.edu.sg/courses/welcome-to-bgst)

## Submissions, Deadlines & Extensions

Most assignment deadlines are due 3 months after the last lecture. Details of the deadline are specified in the course syllabus of each course.

For all credit students, the deadline for submission of assignments is 3 months from the first day of the month following the last lecture / online session. Credit students who missed the 1st deadline, may submit their assignments no later than the end of the 6th month, but will incur a penalty of one third of a grade on the late assignment.

For all international students who are on a student pass, the deadline for submission of assignments is 1 month from the 1st day of the month following the last lecture. International students may continue to submit assignments no later than the end of the 2nd month, but they will incur a penalty of one third of a grade on the late assignments.

After this 2nd deadline (2 months for international students, 6 months for all other students), the course will be converted to Audit Course status automatically.

# Grading & Transcripts

## Grading Scheme

Grade	Marks	Grade Point	Remark
<b>A+</b>	95	4.0	Excellent
<b>A</b>	90	4.0	
<b>A-</b>	88	3.75	
<b>B+</b>	85	3.5	Good
<b>B</b>	80	3.0	
<b>B-</b>	78	2.75	Adequate
<b>C+</b>	75	2.5	
<b>C</b>	70	2.0	Weak Pass
<b>C-</b>	68	1.75	
<b>D+</b>	65	1.5	Inadequate
<b>D</b>	60	1.0	
<b>F</b>	<60	0.0	Fail

## Grading Point Average Awards

Grade Point	Award	Remark
<b>3.75</b>	<i>cum laude</i>	with praise
<b>3.85</b>	<i>magna cum laude</i>	with great praise
<b>3.95</b>	<i>summa cum laude</i>	with highest praise

## Transcripts

Updates of academic records are issued by the Registrar's Office at the end of each semester. Official transcripts bearing the seal of BGST may be issued upon receipt of a completed Transcript Application Form and the related fee. There should be no outstanding fees in order for transcripts to be issued.

# Graduation Requirements

BGST's Convocation is held in May each year. To be eligible for graduation, a student must have:

1. Satisfactorily completed all requirements for the programme by the end of April.
2. Submitted a completed Application for Graduation Form to the Registrar's Office by March 31st for the intended year of graduation.
3. No outstanding payments (e.g. student or library membership fees) due to BGST.
4. Met the minimum academic Grade Point Average (GPA) accordingly:

Programme	GPA Minimum
<b>Grad Cert</b>	2.75
<b>Grad Dip</b>	2.75
<b>MATIS</b>	3.0
<b>MDiv</b>	3.0



## FAQ's

Should you have questions that might not have been addressed, please write to us or visit our FAQ page.



FAQ's  
[courses.bgst.edu.sg/pages/frequently-asked-questions](https://courses.bgst.edu.sg/pages/frequently-asked-questions)



Email  
[contact@bgst.edu.sg](mailto:contact@bgst.edu.sg)



For enquiries,  
contact us.



2 Kallang Avenue  
#11-01, CT Hub  
Singapore 339407



[www.bgst.edu.sg](http://www.bgst.edu.sg)



[contact@bgst.edu.sg](mailto:contact@bgst.edu.sg)

28 August 2025

Disclaimer: All information contained in this prospectus is accurate at the time of production but is subject to change.